

WAAS CH 41250 W18A	APP CRS 177°	Rwy Idg TDZE 1711 Apt Elev 1711	6064
--	------------------------	---	-------------

RNAV (GPS) Y RWY 18

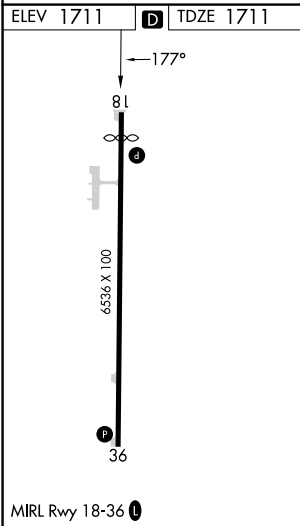
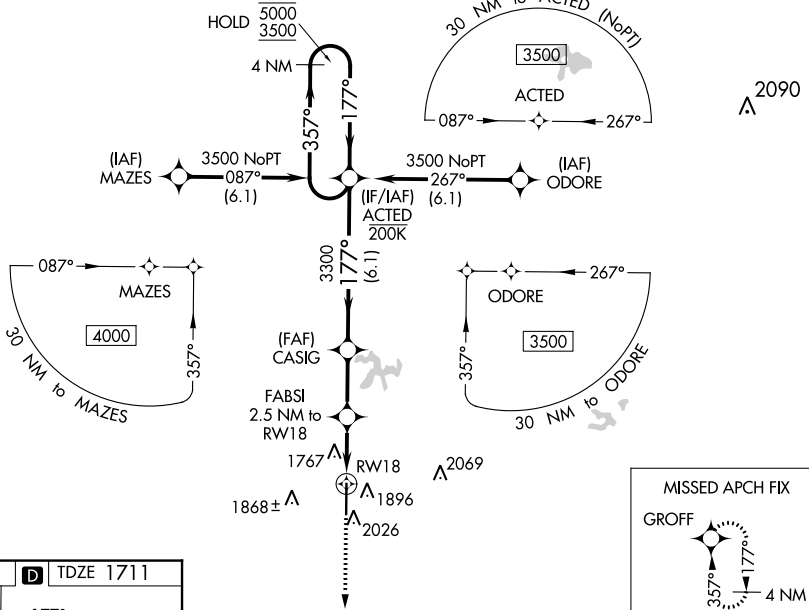
GREGORY M SIMMONS MEML (GZLN)

RNP APCH - GPS.

⚠ Circling NA east of Rwy 18-36. Baro-VNAV and VDP NA when using Eastland altimeter setting. For uncompensated Baro-VNAV systems, LNAV/VNAV NA below -18°C or above 54°C. When local altimeter setting not received, use Eastland altimeter setting and increase LPV DA to 2023 feet; increase LNAV/VNAV DA to 2067 feet; increase all MDAs 80 feet and LNAV visibility Cat C/D 3/8 SM. Rwy 18 helicopter visibility reduction below 3/8 SM NA.

MISSED APPROACH:
Climb to 3700 direct
GROFF and hold.

AWOS-4 118.0	ABILENE APP CON 125.0 338.3	CTAF 122.9
------------------------	---------------------------------------	----------------------



3700	GROFF	4 NM Holding Pattern		
FABSI 2.5 NM to RW18	CASIG 3300	ACTED		
1 NM to RW18	2540	3300		
1 NM	1.5 NM	2.4 NM	6.1 NM	
GP 3.00° TCH 45				
CATEGORY	A	B	C	D
LPV DA	1961-1		250 (300-1)	
LNAV/VNAV DA	1985-1		274 (300-1)	
			2005-1 294 (300-1)	
LNAV MDA	2060-1		349 (400-1)	
			2080-1 369 (400-1)	
CIRCLING	2140-1 429 (500-1)	2180-1 469 (500-1)	2180-1½ 469 (500-1½)	2600-3 889 (900-3)

SC-2, 26 DEC 2024 to 23 JAN 2025

SC-2, 26 DEC 2024 to 23 JAN 2025