

APP CRS <b>084°</b>	Rwy Idg TDZE Apt Elev <b>4530</b>	N/A N/A <b>4530</b>
------------------------	--	---------------------------

# RNAV (GPS)-A

SPANISH FORK MUNI/WOODHOUSE FLD (SPK)

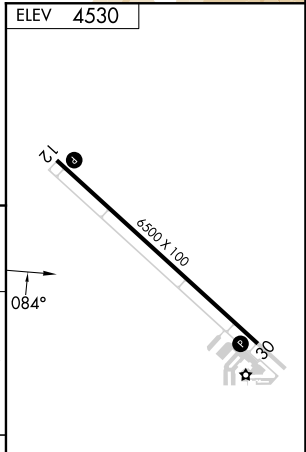
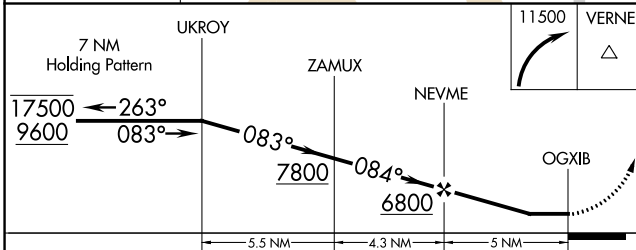
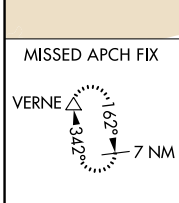
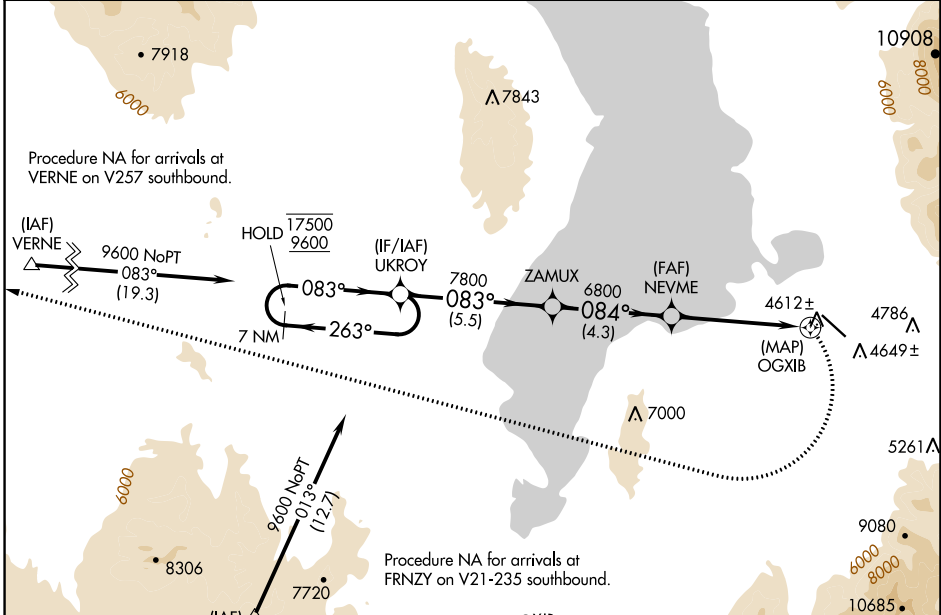
RNP APCH-GPS.

⚠️ NA  
-21°C

When local altimeter setting not received, use Provo altimeter setting and increase all MDAs 20 feet.

MISSED APPROACH: (Do not exceed 185K until turn completion) Climbing right turn to 11500 direct VERNE and hold.

AWOS-3PT <b>119.275</b>	SALT LAKE CITY APP CON <b>118.85 233.7</b>	CTAF <b>122.9</b>
----------------------------	---	----------------------



CATEGORY	A	B	C	D
CIRCLING	6200-1¼ 1670 (1700-1¼)	6200-1½ 1670 (1700-1½)	6200-3 1670 (1700-3)	

MIRL Rwy 12-30  
REIL Rwy 12 and 30

SW-4, 26 DEC 2024 to 23 JAN 2025

SW-4, 26 DEC 2024 to 23 JAN 2025