

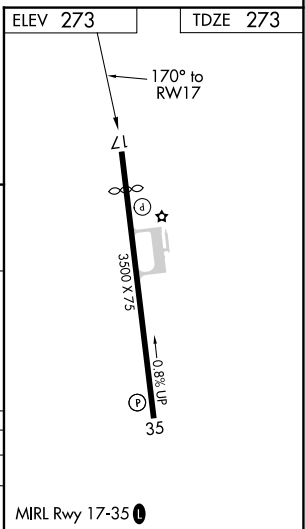
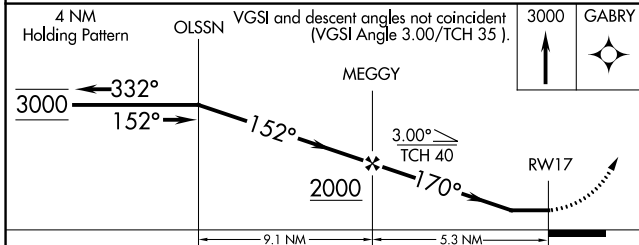
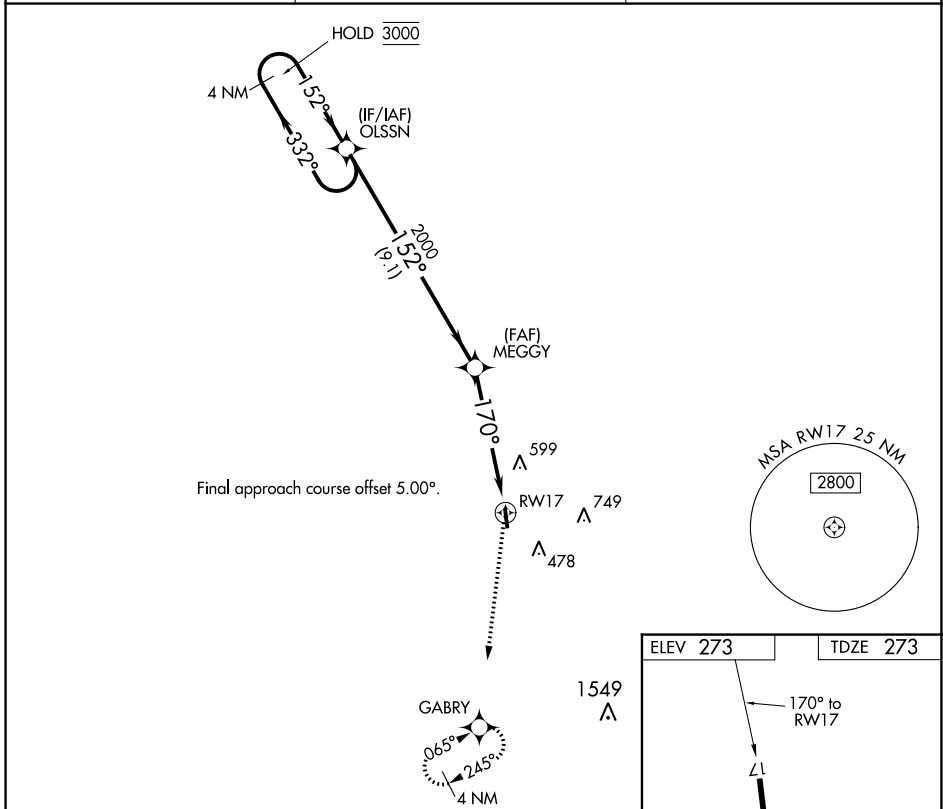
APP CRS	Rwy Idg	3000
170°	TDZE	273
	Apt Elev	273

RNAV (GPS) RWY 17

DEAN GRIFFIN MEML (M24)

RNP APCH - GPS.	MISSED APPROACH: Climb to 3000 direct GABRY and hold, continue climb-in-hold to 3000.
▼ Rwy 17 helicopter visibility reduction below 3/4 SM NA. ▲ NA Use Hattiesburg Bobby L Chain Muni altimeter setting.	

HBG ASOS 135.425	GULFPORT APP CON * 127.5 254.25	UNICOM 122.8 (CTAF) 0
----------------------------	---	---------------------------------



CATEGORY	A	B	C	D
LNAV MDA	880-1	607 (700-1)		NA
CIRCLING	880-1 607 (700-1)	1040-1 767 (800-1)		NA

SC-4, 26 DEC 2024 to 23 JAN 2025

SC-4, 26 DEC 2024 to 23 JAN 2025