

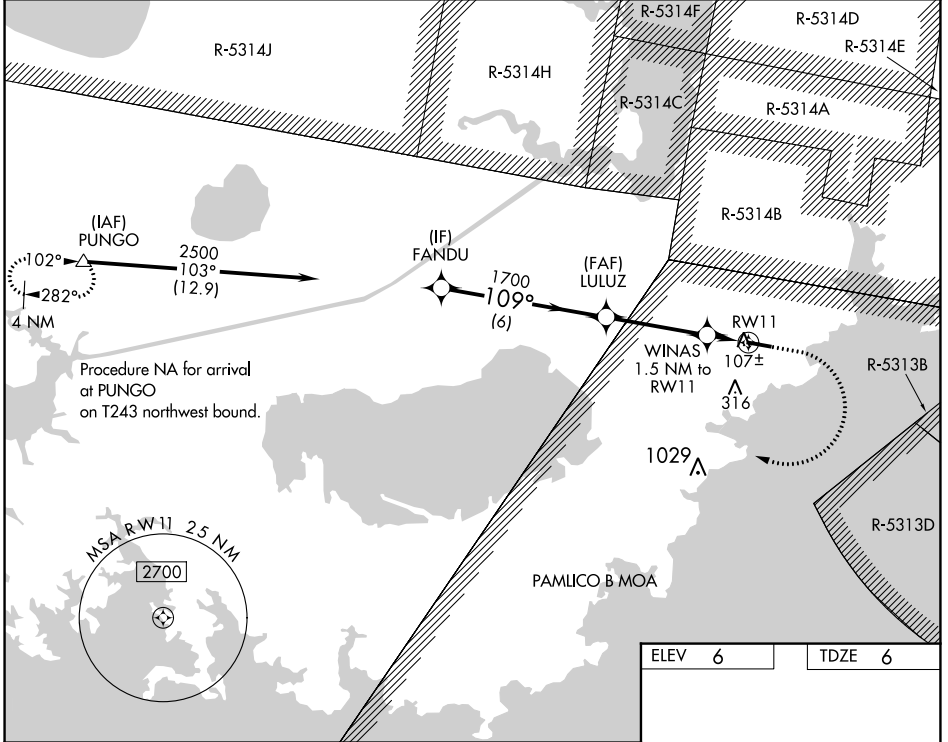
WAAS CH 40442 W11A	APP CRS 109°	Rwy Idg TDZE Apt Elev	4700 6 6
--	------------------------	-----------------------------	-------------------------------------

RNAV (GPS) RWY 11

HYDE COUNTY (7W6)

RNP APCH. ▼ ▲	MISSED APPROACH: Climb to 500 then climbing right turn 3000 direct PUNGO and hold.
---------------------	--

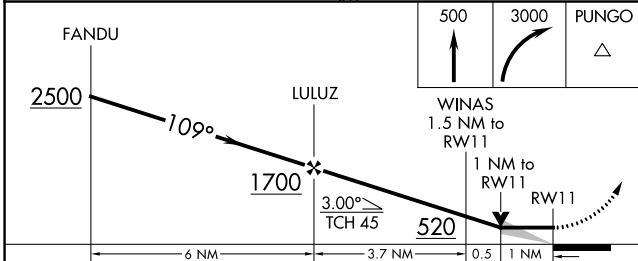
AWOS-3P 119.275	CHERRY POINT APP CON 119.75 360.775	UNICOM 122.7 (CTAF) ①
---------------------------	---	---------------------------------



SE-2, 26 DEC 2024 to 23 JAN 2025

SE-2, 26 DEC 2024 to 23 JAN 2025

ELEV 6	TDZE 6
--------	--------



CATEGORY	A	B	C	D
LP MDA	360-1	354 (400-1)		NA
LNAV MDA	360-1	354 (400-1)		NA
② CIRCLING	420-1 414 (500-1)	460-1 454 (500-1)		NA

MIRL Rwy 11-29 ①