

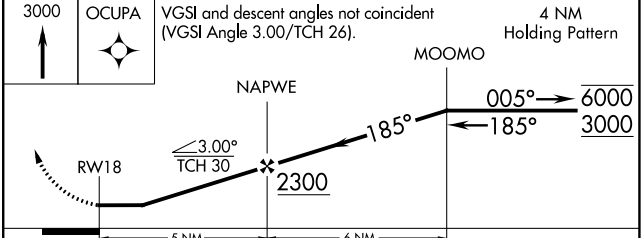
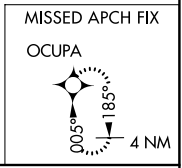
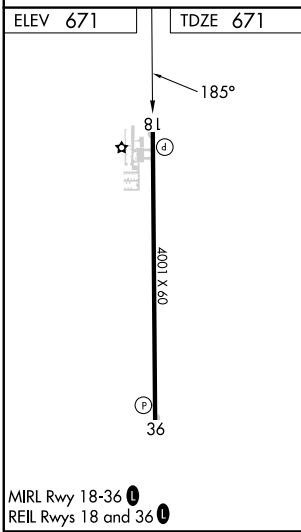
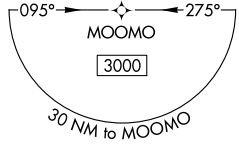
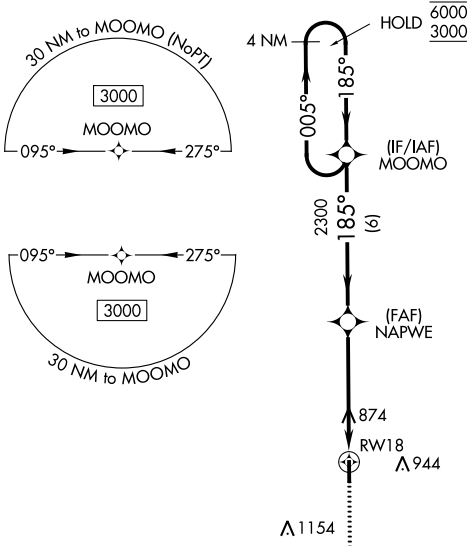
APP CRS	Rwy Idg	<b>4001</b>
<b>185°</b>	TDZE	<b>671</b>
	Apt Elev	<b>671</b>

# RNAV (GPS) RWY 18

DELPHI MUNI (I19)

RNP APCH - GPS.	MISSED APPROACH: Climb to 3000 direct OCUPA and hold.
<p><b>⚠</b> NA Rwy 18 helicopter visibility reduction below 1 SM NA. Use Monticello altimeter setting. Procedure NA at night.</p>	

MCX AWOS-3P <b>124.05</b>	GRISSOM APP CON* <b>121.05 338.275</b>	CTAF <b>122.9</b>
------------------------------	---	----------------------



OCUPA	MISSED APCH FIX			
3000	OCUPA			
	VGSI and descent angles not coincident (VGSI Angle 3.00/TCH 26).			
	4 NM Holding Pattern			
	MOOMO			
	NAPWE			
	RW18			
	2300			
	5 NM			
	6 NM			
	005°			
	185°			
	6000			
	3000			
CATEGORY	A	B	C	D
LNAV MDA	1160-1	489 (500-1)	NA	
CIRCLING	1160-1	1220-1	NA	
	489 (500-1)	549 (600-1)		

EC-2, 26 DEC 2024 to 23 JAN 2025

EC-2, 26 DEC 2024 to 23 JAN 2025