

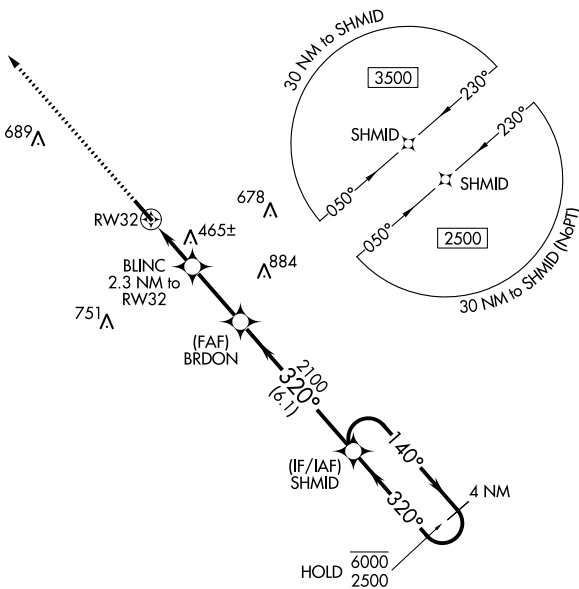
APP CRS	Rwy Idg	5002
320°	TDZE	301
	Apt Elev	301

RNAV (GPS) RWY 32

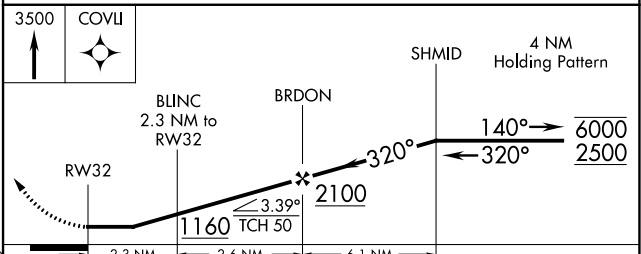
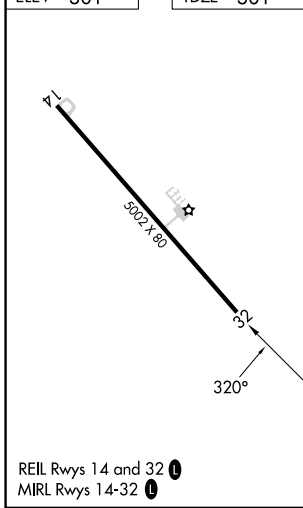
FRANKLIN FLD (Ø7A)

RNP APCH - GPS.		MISSED APPROACH: Climb to 3500 direct COVLI and hold.
V	Rwy 32 helicopter visibility reduction below 1 SM NA.	
NA	Procedure NA at night. Use Troy altimeter setting.	

TOI ASOS 120.925	MONTGOMERY APP CON * 121.2 269.05	UNICOM 122.8 (CTAF) Ø
----------------------------	---	--



ELEV 301	TDZE 301
----------	----------



CATEGORY	A	B	C	D
LNAV MDA	780-1	479 (500-1)	780-1 ³ / ₈	479 (500-1 ³ / ₈)
CIRCLING	840-1	539 (600-1)	900-1 ¹ / ₂ 599 (600-1 ¹ / ₂)	1060-2 ¹ / ₂ 759 (800-2 ¹ / ₂)

SE-4, 26 DEC 2024 to 23 JAN 2025

SE-4, 26 DEC 2024 to 23 JAN 2025