

RADAR required

Rwy	Knots	60	120	180	240	300	360
H1	V/V(fpm)	500	1000	1500	2000	2500	3000

Minimum Climb Rate to 500

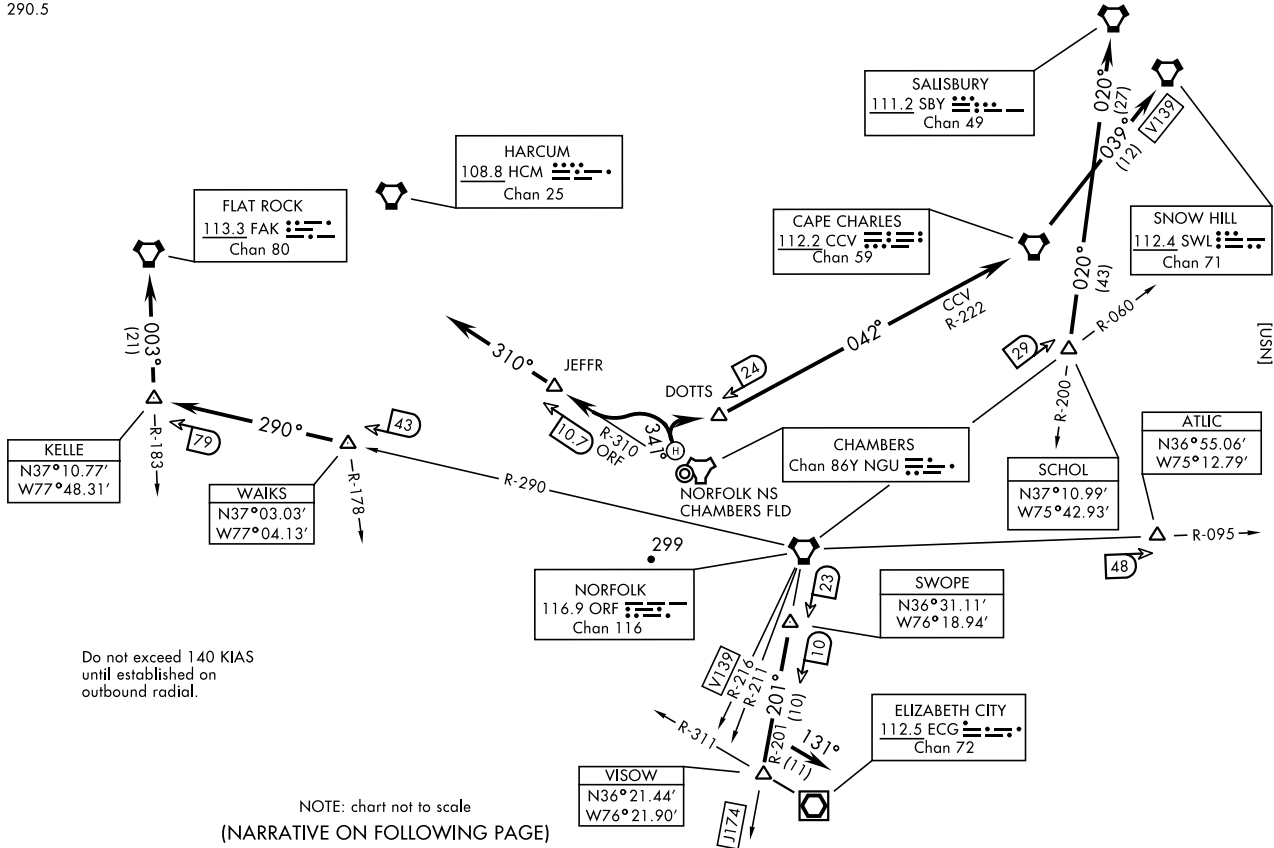
COPTER PRIDE TWO DEPARTURE (NHU2.NHU)

NORFOLK, VIRGINIA
NORFOLK NS HELIPORT (KNHU)

GND CON
298.95
CHAMBERS TOWER
124.3 379.15
NAVY NORFOLK HEL TOWER
126.375 290.5

COPTER PRIDE TWO DEPARTURE (NHU2.NHU)

NORFOLK NS HELIPORT (KNHU)
NORFOLK, VIRGINIA



Do not exceed 140 KIAS until established on outbound radial.

NOTE: chart not to scale
(NARRATIVE ON FOLLOWING PAGE)

COPTER PRIDE TWO DEPARTURE (NHU2.NHU)NORFOLK NS HELIPORT (KNHU)
NORFOLK, VIRGINIA

[USN]

DEPARTURE ROUTE DESCRIPTION

TAKEOFF HELIPORT WESTBOUND: Climb heading 341° then climbing left turn to JEFFR, minimum climb rate 500 ft./NM to 500, thence...

TAKEOFF HELIPORT EASTBOUND: Climb heading 341° then climbing right turn to DOTTS, minimum climb rate 500 ft./NM to 500, thence...

... via RADAR vectors to assigned transition. Maintain 2000 or assigned altitude. Expect clearance to requested altitude/flight level 10 minutes after departure.

ATLJC TRANSITION (NHU2.ATLJC): Via vectors to ATLJC.

CAPE CHARLES TRANSITION (NHU2.CCV): Via vectors to CCV VORTAC. (NOTE: For altitudes 5000 and below).

ELIZABETH CITY TRANSITION (NHU2.ECG): Via vectors to SWOPE, then via ORF VORTAC R-201 to VISOW (ORF R-201/33 DME), then direct ECG VOR/DME.

FLAT ROCK TRANSITION (NHU2.FAK): Via vectors to WAKKS, then via ORF VORTAC R-290 to KELLE, then direct FAK VORTAC.

HARCUM TRANSITION (NHU2.HCM): Via vectors to HCM VORTAC.

SAUSBURY TRANSITION (NHU2.SBY): Via vectors to SCHOL, then SBY R-200 to SBY VORTAC.

SNOW HILL TRANSITION (NHU2.SWL): Via vectors to SCHOL, thence SBY R-200 to V139 to SWL VORTAC.

V139 TRANSITION (NHU2.ORB): Via vectors to V139.

NOTE: Transitions are part of the Preferred Departure Route (PDR) system and established as an Air Traffic flow procedure from the Norfolk Terminal Area. These fixes are to be used as the initial filing point out of NS Norfolk.

COPTER PRIDE TWO DEPARTURE (NHU2.NHU)

Amh 1 11JUL24

NORFOLK, VIRGINIA
NORFOLK NS HELIPORT (KNHU)