

# COPTER TACAN 310

TACAN NGU Chan <b>86(Y)</b>	APCH CRS <b>130°</b>	Rwy ldg TDZE Arpt Elev <b>N/A</b> <b>N/A</b> <b>10</b>
--------------------------------	-------------------------	---

[USN]

NORFOLK NS HELIPORT (KNHU)

**▼** Circling not authorized S of H2.

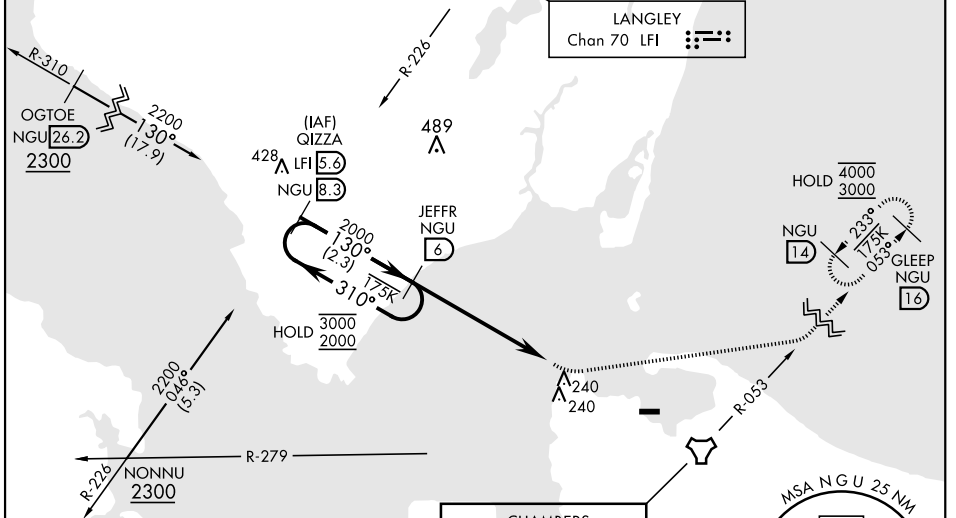
MISSED APPROACH: Climbing left turn to 3000 to intercept NGU TACAN R-053 to GLEEP and hold.

CHAMBERS TOWER <b>124.3 379.15</b>	NAVY NORFOLK HEL TOWER <b>126.375 290.5</b>	GND CON <b>298.95</b>
---------------------------------------	--	--------------------------

Limit all segments to 90 KIAS.

Increase to 90 KIAS (or greater) upon reaching the missed approach altitude. Maintain 90 KIAS (or greater) while in holding.

Proceed east visually from MAP, or conduct the specified missed approach. Remain north of the pier peninsula.



NE-3, 26 DEC 2024 to 23 JAN 2025

NE-3, 26 DEC 2024 to 23 JAN 2025

ELEV 10

MIRL all rwys

CHAMBERS Chan 86(Y) NGU

EMERG SAFE ALT 100 NM 4100

One Minute Holding Pattern

JEFFR NGU 6

2000 ← 310°

130° →

130°

LEWDD NGU 3.2

TACAN

2.8 NM

CATEGORY	COPTER	
<b>C</b> CIRCLING	540-1 $\frac{7}{8}$	530 (600-1 $\frac{7}{8}$ )

# COPTER TACAN 310