

APP CRS	Rwy Idg	<b>3849</b>
<b>045°</b>	TDZE	<b>281</b>
	Apt Elev	<b>288</b>

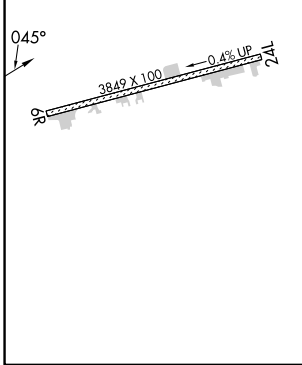
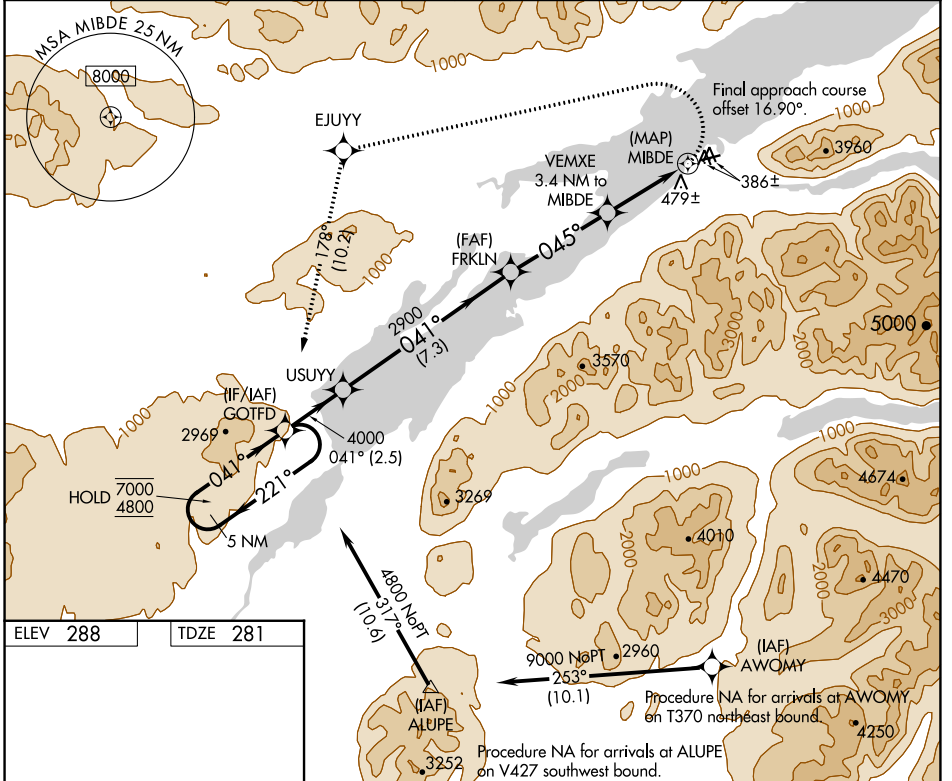
# RNAV (GPS) RWY 6R

WILDER RUNWAY (Ø5K)(PAKX)

RNP APCH - GPS.
Procedure NA at night. Rwy 6R helicopter visibility reduction below 1 SM NA. Circling NA south of Rwy 6R-24L.
-18°C

MISSED APPROACH: Climbing left turn to 4800 direct EJUY and on track 178° to GOTFD and hold, continue climb-in-hold to 4800.

AWOS-3P <b>118.025</b>	ANCHORAGE CENTER <b>118.8 351.8</b>	CTAF <b>122.9</b>
---------------------------	--	----------------------



5 NM Holding Pattern	Visual Segment - Obstacles.		4800	EJUY	tr 178°	GOTFD
7000 ← 221°	USUY	FRKLN	VEMXE 3.4 NM to MIBDE	MIBDE		
4800 041° →	4000	2900	1580			
	← 2.5 NM	← 7.3 NM	← 4.1 NM	← 3.4 NM	← 0.5 NM	
CATEGORY	A	B	C	D		
LNAV MDA	860-1 579 (600-1)		NA			
CIRCLING	1280-1¼ 992 (1000-1¼)	1980-1½ 1692 (1700-1½)	NA			

AK, 26 DEC 2024 to 20 FEB 2025

AK, 26 DEC 2024 to 20 FEB 2025