

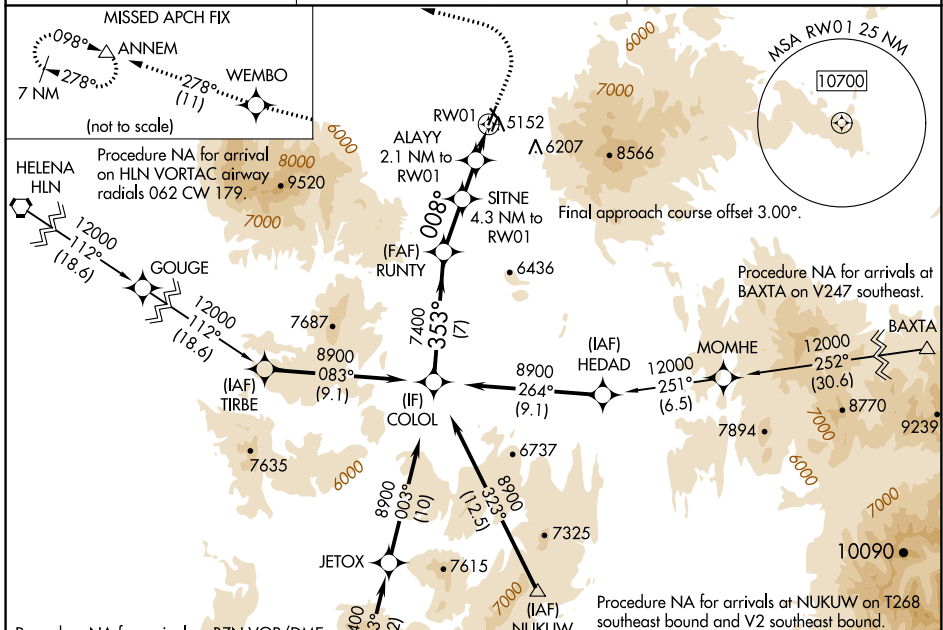
WAAS CH <b>81848</b> W01A	APP CRS <b>008°</b>	Rwy Idg TDZE <b>6100</b> 5046 Apt Elev <b>5065</b>
---------------------------------	------------------------	---

# RNAV (GPS) RWY 1

WHITE SULPHUR SPRINGS (7S6)

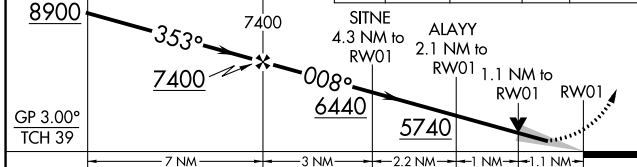
RNP APCH - GPS.	MISSED APPROACH: Climb to 5500 then climbing left turn to 9400 direct WEMBO and on track 278° to ANNEM and hold.
<p>▼ For uncompensated Baro-VNAV systems, LNAV/VNAV NA below -25°C or above 54°C. Circling NA to Rwy's 13 and 31. Circling NA for Cats C and D east of Rwy 1-19. Circling NA for all Cats east of Rwy 1-19 at night.</p>	

AWOS-3PT <b>118.525</b>	SALT LAKE CENTER <b>133.4 285.4</b>	CTAF <b>122.9</b>
----------------------------	--	----------------------

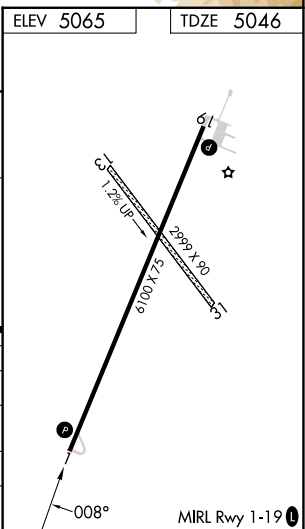


ELEV 5065	TDZE 5046
-----------	-----------

VGSI and RNAV glidepath not coincident COLOL (VGSI Angle 3.00/TCH 39).	5500	9400	WEMBO	tr 278°	ANNEM
---	------	------	-------	---------	-------



CATEGORY	A	B	C	D
LPV DA		5296-1	250 (300-1)	
LNAV/VNAV DA		5313-1	267 (300-1)	
LNAV MDA		5420-1	374 (400-1)	
CIRCLING	5620-1 555 (600-1)	5920-1¼ 855 (900-1¼)	5920-2¾ 855 (900-2¾)	5920-3 855 (900-3)



NW-1, 26 DEC 2024 to 23 JAN 2025

NW-1, 26 DEC 2024 to 23 JAN 2025