

WAAS CH 65648 W19A	APP CRS 188°	Rwy Idg 6100 TDZE 5049 Apt Elev 5065
--	------------------------	---

RNAV (GPS) RWY 19

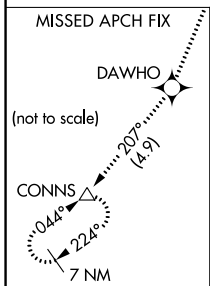
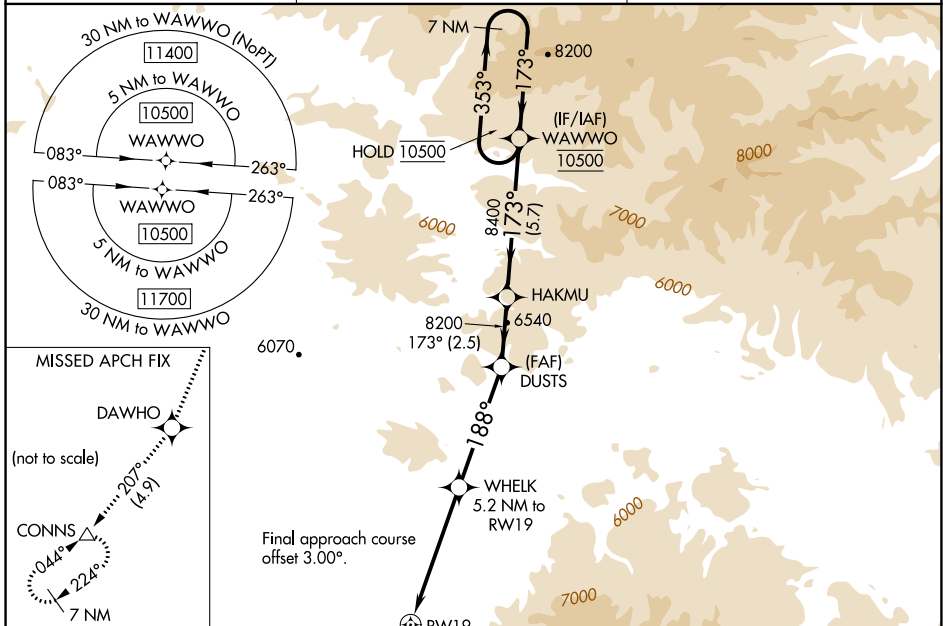
WHITE SULPHUR SPRINGS (7S6)

RNP APCH - GPS.

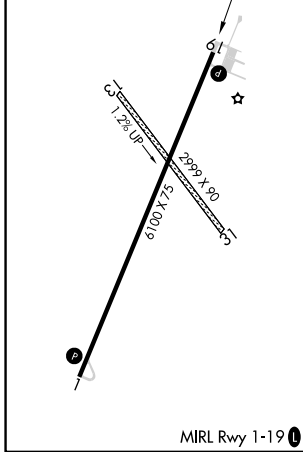
⚠ For uncompensated Baro-VNAV systems, LNAV/VNAV NA below -25°C or above 54°C. Rwy 19 helicopter visibility reduction below ¾ SM NA. Circling NA to Rwys 13 and 31. Circling NA for Cats C and D east of Rwy 1-19. Circling NA for all Cats east of Rwy 1-19 at night.

MISSED APPROACH: Climb to 5700 then climb to 10000 direct DAWHO and on track 207° to CONNS and hold, continue climb-in-hold to 10000.

AWOS-3PT 118.525	SALT LAKE CENTER 133.4 285.4	CTAF 122.9
----------------------------	--	----------------------



ELEV 5065	TDZE 5049
-----------	-----------



5700	10000	DAWHO	tr 207°	CONNS	WAWWO
↑	↑	✧		△	7 NM Holding Pattern
WHELK 5.2 NM to RWY 19		DUSTS 8200	HAKMU		WAWWO 7 NM Holding Pattern
2.5 NM	2.7 NM	4.6 NM	2.5 NM	5.7 NM	
RWY 19		WHELK 6740	DUSTS 8200	WAWWO 10500	
188°		173°		353°	
2.5 NM		4.6 NM		5.7 NM	
GP 3.00°		TCH 35			
CATEGORY	A	B	C	D	
LPV DA	5415-1		366 (400-1)		
LNAV/VNAV DA	5495-1 3/8		446 (500-1 3/8)		
LNAV MDA	5880-1 831 (900-1)	5880-1 1/4 831 (900-1 1/4)	5880-2 1/2	831 (900-2 1/2)	
CIRCLING	5880-1 1/4 815 (900-1 1/4)	5920-1 1/4 855 (900-1 1/4)	5920-2 1/2 855 (900-2 1/2)	5920-2 3/4 855 (900-2 3/4)	

NW-1, 26 DEC 2024 to 23 JAN 2025

NW-1, 26 DEC 2024 to 23 JAN 2025