

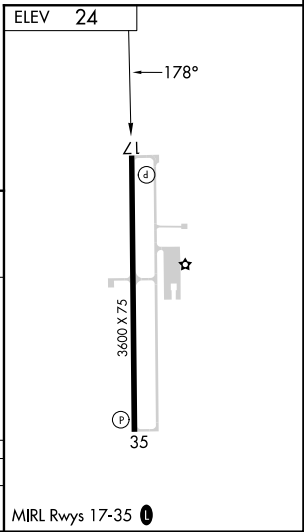
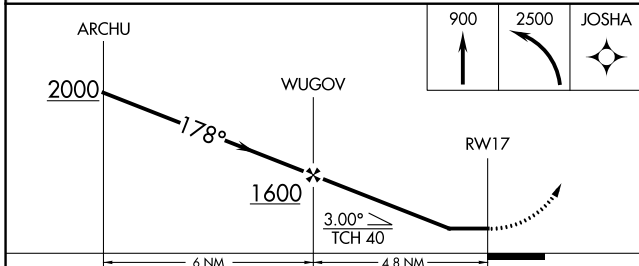
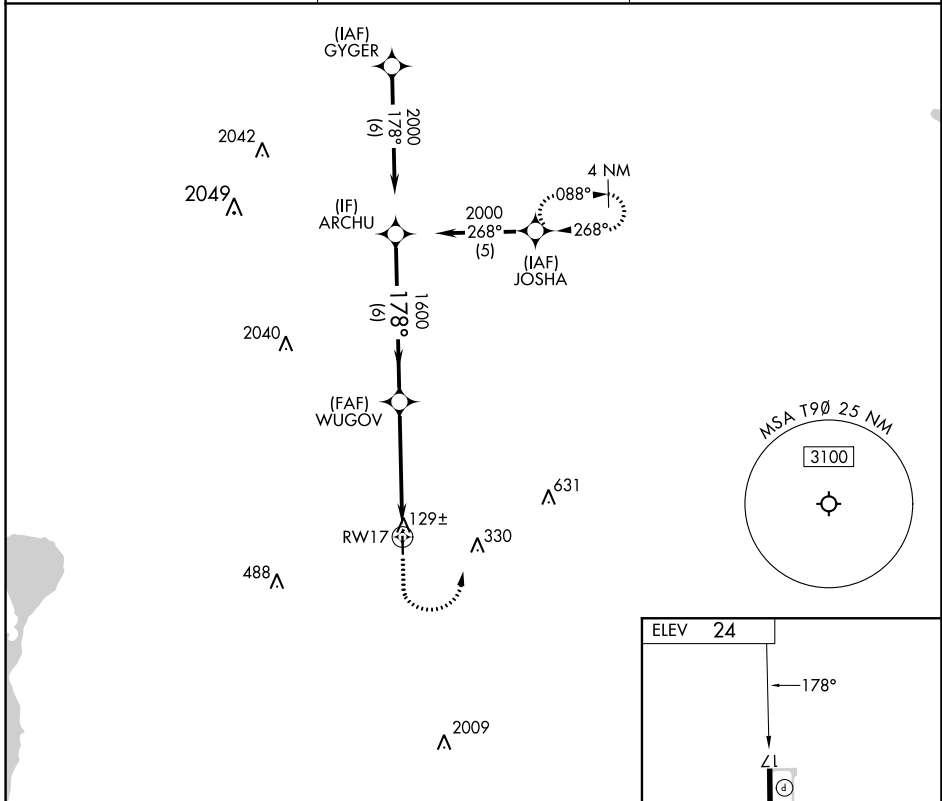
APP CRS	Rwy Idg	NA
178°	TDZE	NA
	Apt Elev	24

RNAV (GPS)-A

CHAMBERS COUNTY/WINNIE STOWELL (T9 \emptyset)

RNP APCH - GPS.	<p>⚠ Procedure NA at night. Rwy 17 and 35 helicopter visibility reduction below 1 SM NA. Use Beaumont altimeter setting; when not received, use Liberty altimeter setting and increase all MDA's 20 feet.</p>	<p>⚠ MISSED APPROACH: Climb to 900 then climbing left turn to 2500 direct JOSHUA and hold.</p>
-----------------	--	---

BMT AWOS-3PT 118.425	HOUSTON APP CON 121.3 377.1	CTAF 122.9 \emptyset
--------------------------------	---------------------------------------	---



CATEGORY	A	B	C	D
CIRCLING	480-1	456 (500-1)	NA	

SC-5, 26 DEC 2024 to 23 JAN 2025

SC-5, 26 DEC 2024 to 23 JAN 2025