

TACAN NBS Chan 73	APCH CRS 142°	Rwy Idg 6002 TDZE 23 Arprt Elev 23
--------------------------	----------------------	---

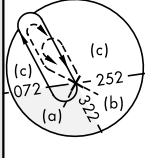
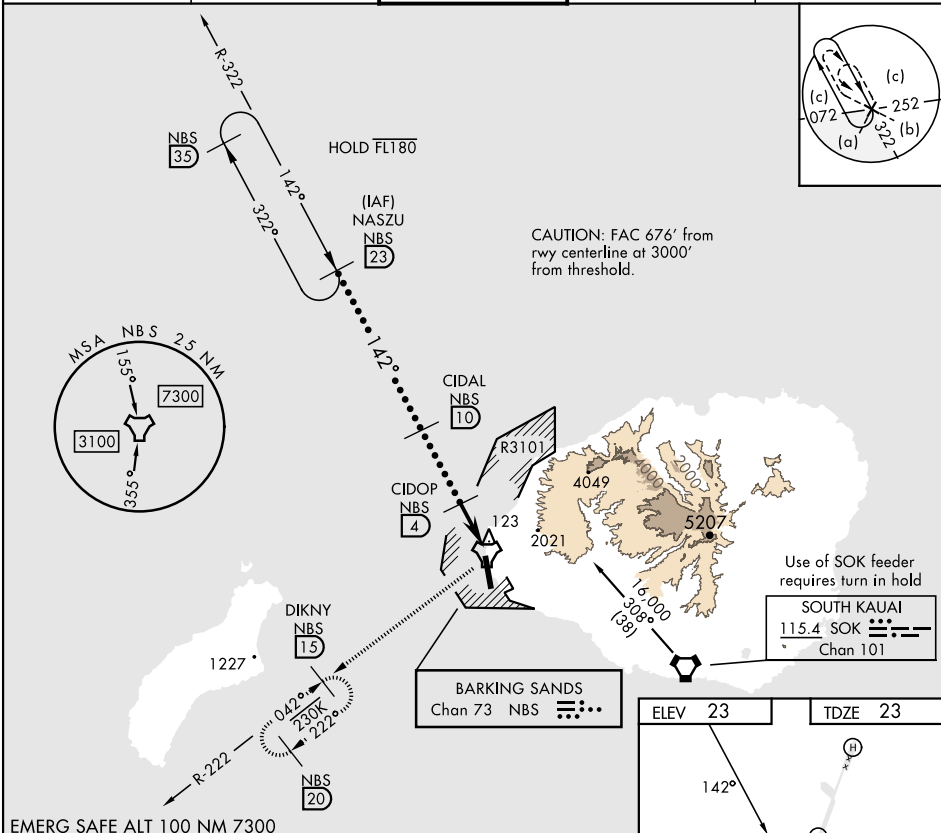
AL-767 [USN]

BARKING SANDS PMRF (PHBK)

*Circling not authorized E of Rwy 16-34.

MISSED APPROACH: Climbing right turn to 3000 via NBS TACAN R-222 to DIKNY and hold.

ATIS★ 128.0	HCf APP 126.5 269.4	TOWER★ 126.2 360.2	GND CON★ 124.2 340.2	UNICOM 122.8
-----------------------	-------------------------------	------------------------------	--------------------------------	------------------------



PAC, 26 DEC 2024 to 20 FEB 2025

PAC, 26 DEC 2024 to 20 FEB 2025

EMERG SAFE ALT 100 NM 7300		ELEV 23		TDZE 23	
NASZU R-322 (23) **16,000 ** Or as assigned 3.13° TCH 40		3000 NBS R-222 CIDAL (10)		3000 DIKNY (15)	
142° 3000 1500		CIDOP (4)		TACAN SHOWS 0.8, 0.2	
CATEGORY C		CATEGORY D		CATEGORY E	
S-16 440-1½		417 (500-1½)		(600-2)	
CIRCLING* 480-1½, 457 (500-1½)		580-2		557 (600-2)	
HIRL Rwy 16-34					