

KEKAHA, KAUAI I, HAWAII

# RNAV (GPS) RWY 34

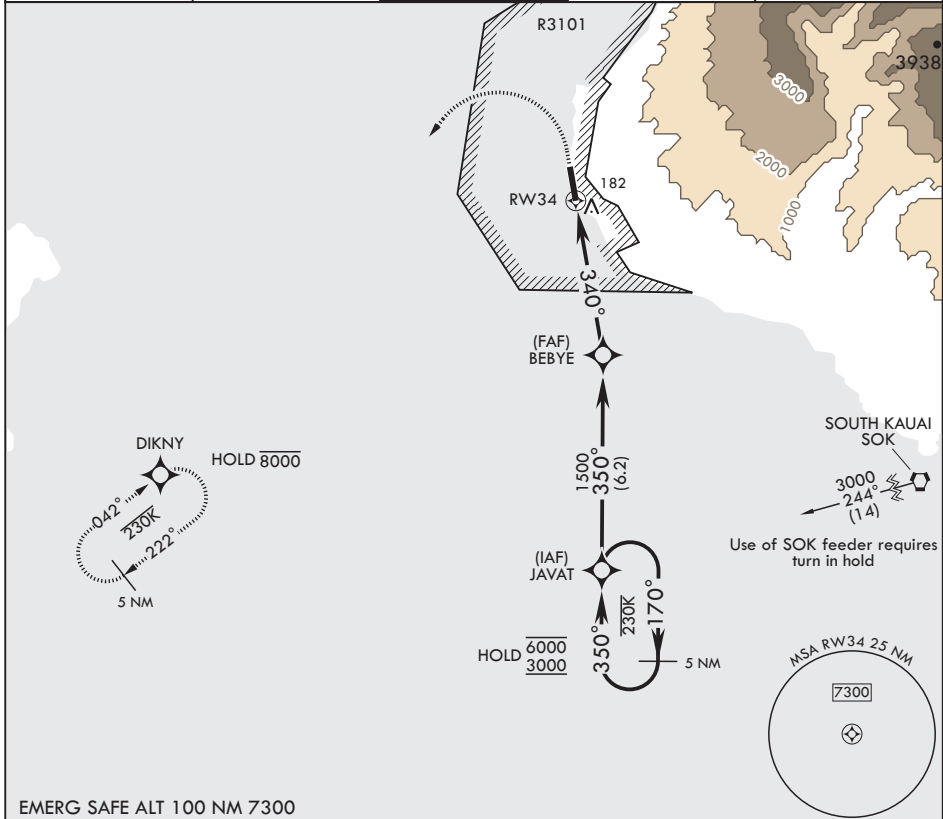
APCH CRS <b>340°</b>	Rwy Idg TDZE Arprt Elev	<b>6002</b> <b>21</b> <b>23</b>
-------------------------	-------------------------------	---------------------------------------

AL-767 (USN)

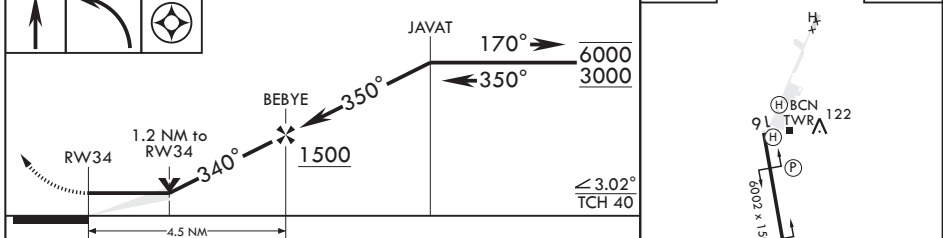
BARKING SANDS PMRF (PHBK)

RNP APCH	MISSED APPROACH: Climb to 550 then climbing left turn to 3000 direct DIKNY and hold.
* Circling not authorized E of Rwy 16-34.	

ATIS* <b>128.0</b>	HCF CENTER <b>126.5 269.4</b>	TOWER* <b>126.2 360.2</b>	GND CON* <b>124.2 340.2</b>	UNICOM <b>122.8</b>
-----------------------	----------------------------------	------------------------------	--------------------------------	------------------------



EMERG SAFE ALT 100 NM 7300



CATEGORY	A	B	C	D
LNAV MDA	440-1 419 (500-1)	480-1 457 (500-1)	440-1½ 457 (500-1½)	419 (500-1½) 580-2 557 (600-2)
CIRCLING*	440-1 417 (500-1)	480-1 457 (500-1)	480-1½ 457 (500-1½)	580-2 557 (600-2)

HIRL all Rwys

KEKAHA, KAUAI I, HAWAII  
Amdt 5 14JUL22

22°01'N - 159°47'W

BARKING SANDS PMRF (PHBK)

# RNAV (GPS) RWY 34

PAC, 26 DEC 2024 to 20 FEB 2025

PAC, 26 DEC 2024 to 20 FEB 2025