

**SOUTH KAUAI-SIX DEPARTURE (OBSTACLE) (SOK6.SOK)**

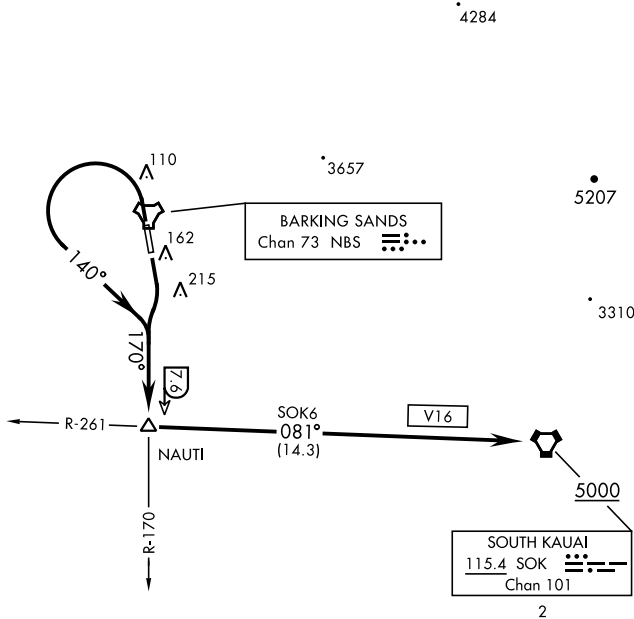
KEKAHA, KAUAI I, HAWAII

BARKING SANDS TOWER ★  
 126.2 360.2  
 HCF APP  
 126.5 269.4

AL-767 [USN]

| Rwy | Knots    | 60  | 120 | 180 | 240  | 300  | 360  |
|-----|----------|-----|-----|-----|------|------|------|
| 16  | V/V(fpm) | 300 | 600 | 900 | 1200 | 1500 | 1800 |
| 34  | V/V(fpm) | 260 | 520 | 780 | 1040 | 1300 | 1560 |

ATC Climb Rate to 5000



PAC, 26 DEC 2024 to 20 FEB 2025

PAC, 26 DEC 2024 to 20 FEB 2025

**DEPARTURE ROUTE DESCRIPTION**

TAKEOFF RWY 16: Climbing right turn to intercept NBS TACAN R-170 to NAUTI, thence...

TAKEOFF RWY 34: Climbing left turn heading 140° to intercept NBS TACAN R-170 to NAUTI, thence...

...turn left to intercept SOK VORTAC R-261(V16) direct SOK. Cross SOK at or above 5000.

**SOUTH KAUAI-SIX DEPARTURE (OBSTACLE) (SOK6.SOK)**

KEKAHA, KAUAI I, HAWAII