

24305

[USN]

KANEOHE BAY MCAS (PHNG)

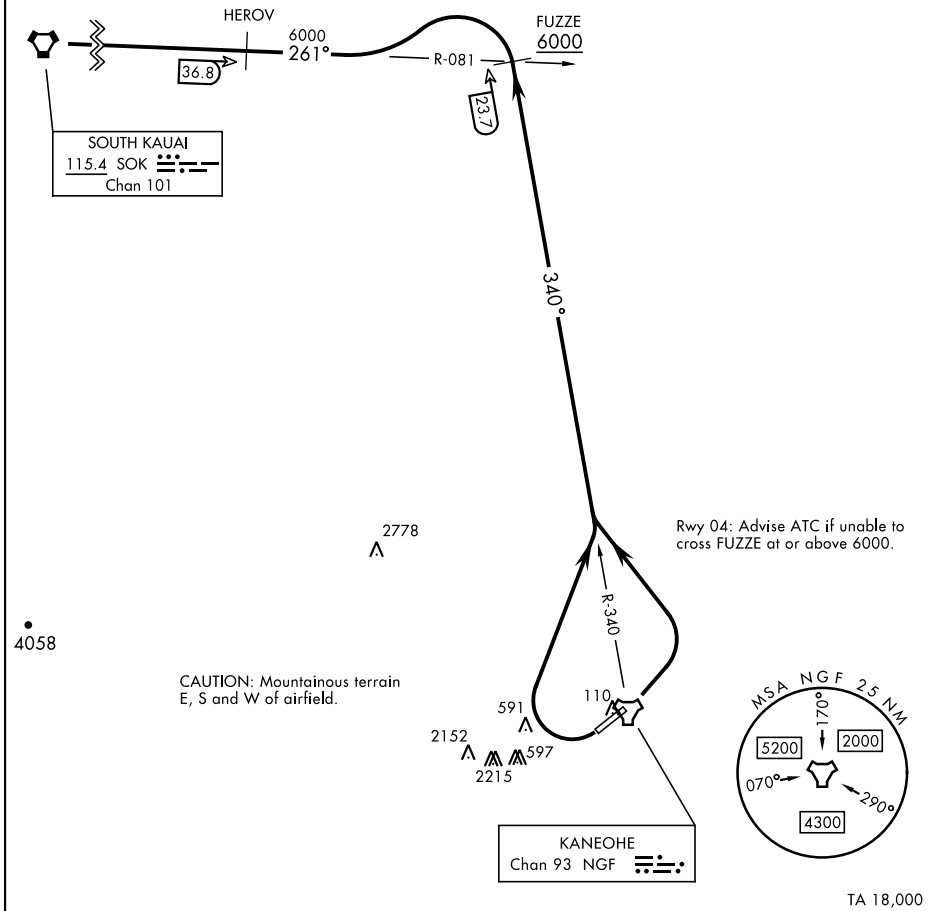
KANEOHE SIX DEPARTURE (OBSTACLE) (NGF6•SOK)

MOKAPU POINT, OAHU I, HAWAII

ATIS 284.5
 CLNC DEL
 294.7
 GND CON
 382.8
 KANEOHE TOWER
 120.7 (CTAF) 360.2
 KANEOHE APP/DEP CON
 125.0 263.5

Rwy	Knots	60	120	180	240	300	360
04†	V/V(fpm)	250	500	750	1000	1250	1500
22*	V/V(fpm)	975	1950	2925	3900	4875	5850

† ATC Climb Rate to 6000
 * Minimum Climb Rate to 3900



PAC, 26 DEC 2024 to 20 FEB 2025

PAC, 26 DEC 2024 to 20 FEB 2025

DEPARTURE ROUTE DESCRIPTION

TAKEOFF RWY 4: Turn left to intercept NGF TACAN R-340 to FUZZE, then intercept SOK VORTAC R-081 to SOK. Cross FUZZE at or above 6000.

TAKEOFF RWY 22: Turn right as soon as practicable to intercept NGF TACAN R-340 to FUZZE, then intercept SOK VORTAC R-081 to SOK.

KANEOHE SIX DEPARTURE (OBSTACLE) (NGF6•SOK)

Orig 31OCT24

MOKAPU POINT, OAHU I, HAWAII

KANEOHE BAY MCAS (PHNG)

TA 18,000