

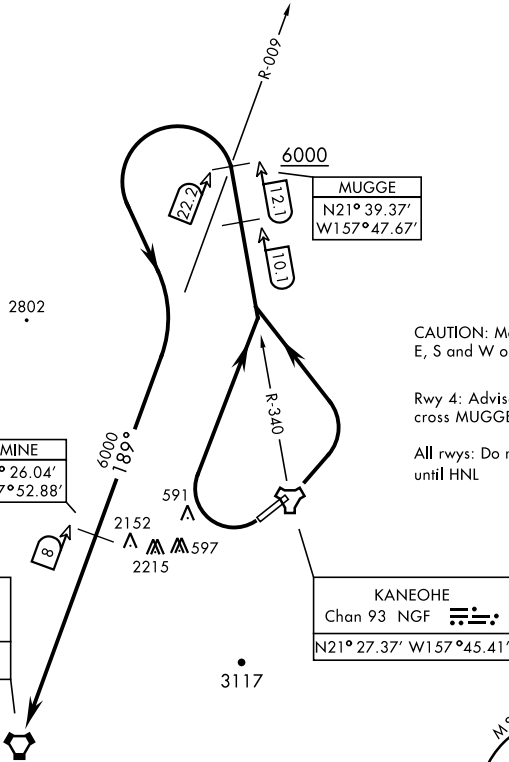
MUGGE ONE DEPARTURE (OBSTACLE) (MUGGE1•HNL)

MOKAPU POINT, OAHU I, HAWAII

Rwy	Knots	60	120	180	240	300	360
22	V/V(fpm)	975	1950	2925	4900	4875	5850

Minimum Climb Rate to 4500

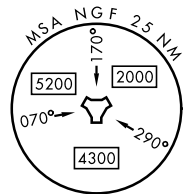
ATIS 284.5
 CLNC DEL
 294.7
 GND CON
 382.8
 KANEHOE TOWER
 120.7 (CTAF) 360.2
 KANEHOE APP/DEP CON
 125.0 263.5



CAUTION: Mountainous terrain E, S and W of airfield.

Rwy 4: Advise ATC if unable to cross MUGGE at or above 6000

All rwys: Do not exceed 250 KIAS until HNL



TA 18,000

DEPARTURE ROUTE DESCRIPTION

TAKEOFF RWY 4: Turn left to intercept NGF TACAN R-340 to MUGGE, then intercept HNL VORTAC R-009 to HNL. Cross MUGGE at or above 6000.

TAKEOFF RWY 22: Turn right as soon as practicable to intercept NGF TACAN R-340 to MUGGE, then intercept HNL VORTAC R-009 to HNL.