

WAAS CH 91519 W35A	APP CRS 355°	Rwy Idg 4759 TDZE 3172 Apt Elev 3176
--	------------------------	---

RNAV (GPS) RWY 35

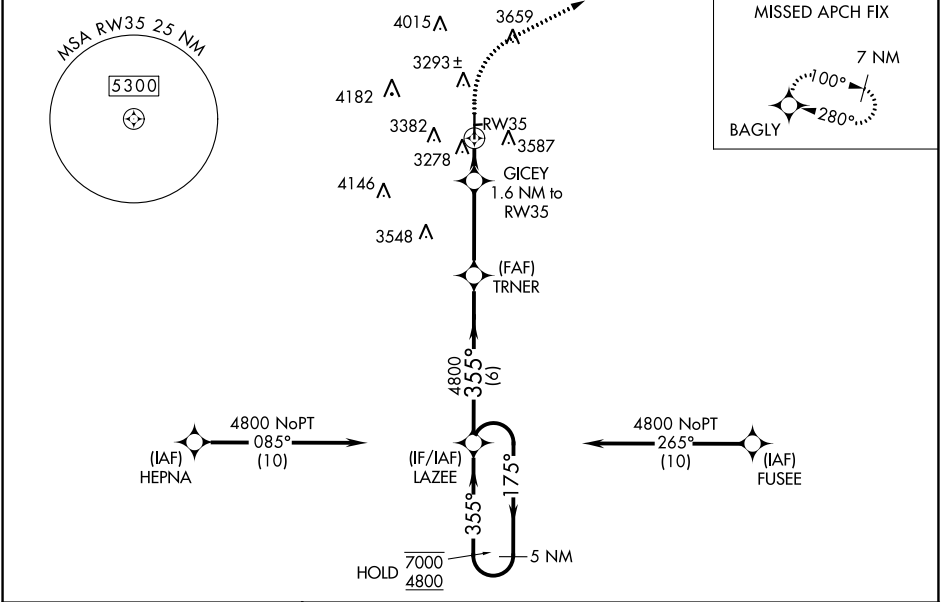
LUBBOCK EXEC AIRPARK (F82)

RNP APCH - GPS.

NA Use LBB altimeter setting. Helicopter visibility reduction below 3/4 SM NA. Circling NA east of Rwy 17-35. Circling Rwy 17, NA at night. Baro-VNAV NA.

MISSED APPROACH: Climb to 3900 then climbing right turn to 6700 direct BAGLY and hold, continue climb-in-hold to 6700. *Missed approach requires minimum climb of 241 feet per NM to 4400.

LBB ASOS 125.3 270.275	LUBBOCK APP CON 119.2 351.8	UNICOM 122.8 (CTAF)
----------------------------------	---------------------------------------	-------------------------------



ELEV 3176	TDZE 3172	3900	6700	BAGLY	TRNER	LAZEE	5 NM Holding Pattern
<p>HIRL Rwys 17-35</p>		<p>4800</p> <p>GICEY 1.6 NM to RW35 3720</p> <p>TRNER 4800</p> <p>LAZEE</p> <p>175° 7000</p> <p>355° 4800</p> <p>4800</p> <p>GP 3.00° TCH 40</p>					
CATEGORY	A	B	C	D			
LPV DA	3462-7/8 290 (300-7/8)			NA			
LNAV/VNAV DA	3469-7/8	297 (300-7/8)	3573-11/8 401 (400-11/8)	NA			
LNAV/VNAV DA*	NA	NA	3469-7/8 297 (300-7/8)	NA			
LNAV MDA	3580-1	408 (500-1)	3720-11/8 548 (600-11/8)	NA			
LNAV MDA*	NA	NA	3580-11/8 408 (500-11/8)	NA			
CIRCLING	3700-1 524 (600-1)	3740-1 564 (600-1)	4580-3 1404 (1500-3)	NA			