

# RNAV (GPS) RWY 7

LAJITAS INTL (T89)

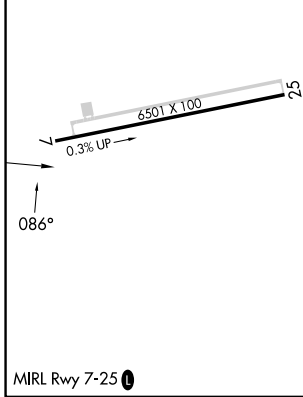
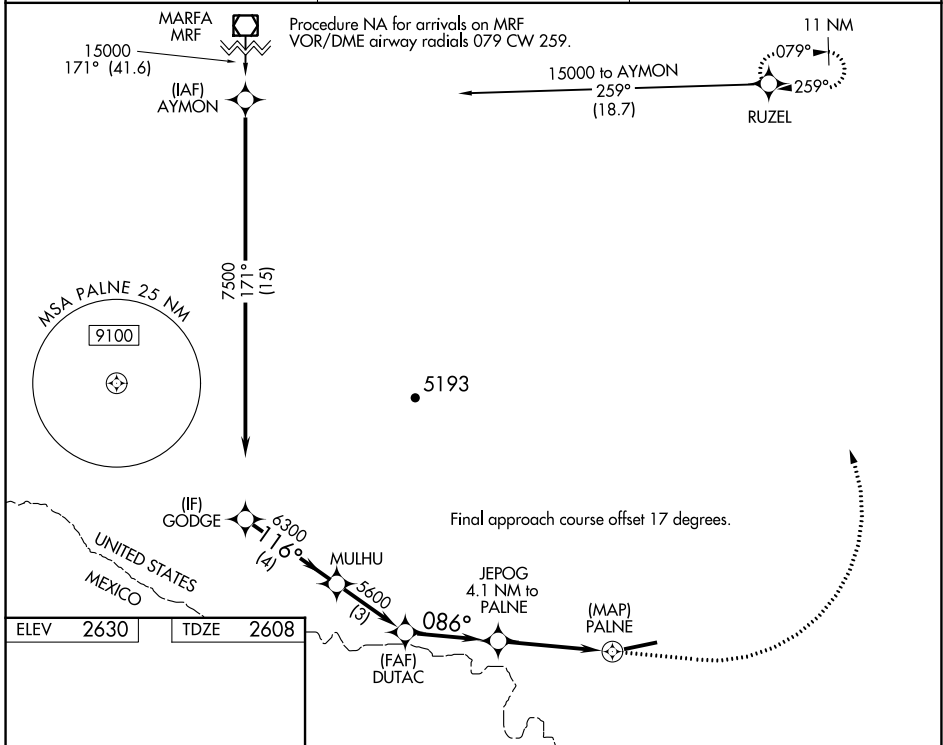
APP CRS	Rwy Idg	<b>6501</b>
<b>086°</b>	TDZE	<b>2608</b>
	Apt Elev	<b>2630</b>

RNP APCH - GPS.

**▼** Rwy 7 helicopter visibility reduction below 3/4 SM NA. When local altimeter setting not received, use Presidio Lely Intl altimeter setting and increase all MDA 140 feet. VDP NA when using Presidio Lely Intl altimeter setting. Circling NA south of Rwy 7-25.

**MISSED APPROACH:** Climb to 4280 then climbing left turn to 15000 direct RUZEL and hold, continue climb in hold to 15000.

AWOS-3 <b>119.275</b>	ALBUQUERQUE CENTER <b>135.875 292.15</b>	UNICOM <b>122.7 (CTAF) 0</b>
--------------------------	---	---------------------------------



	A	B	C	D
LNAV	4140-1 1/4 1532 (1600-1 1/4)	4140-1 1/2 1532 (1600-1 1/2)	4140-3	1532 (1600-3)
CIRCLING	4140-1 1/4 1510 (1600-1 1/4)	4140-1 1/2 1510 (1600-1 1/2)	4140-3 1510 (1600-3)	4180-3 1550 (1600-3)

SC-3, 26 DEC 2024 to 23 JAN 2025

SC-3, 26 DEC 2024 to 23 JAN 2025