

LOC/DME I-ABI 110.3 Chan 40	APP CRS 355°	Rwy Idg 7198 TDZE 1776 Apt Elev 1791
---	------------------------	---

ILS or LOC RWY 35R

ABILENE RGNL (ABI)

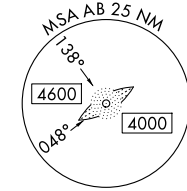
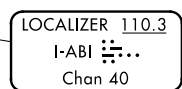
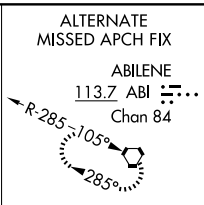
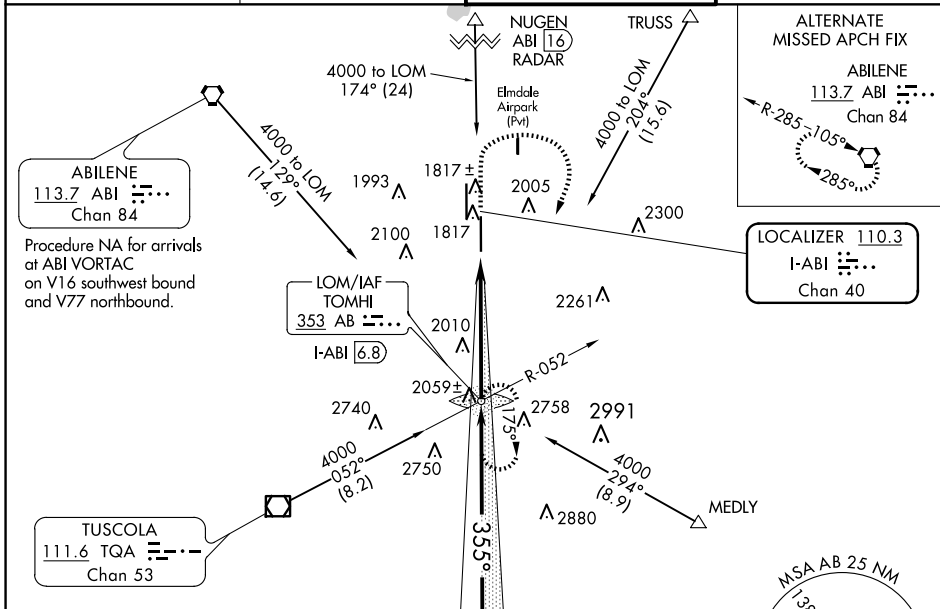
ADF required. RADAR required for procedure entry at NUGEN.



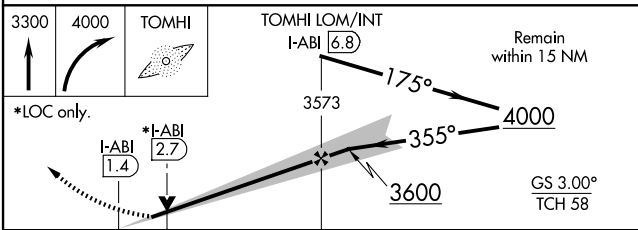
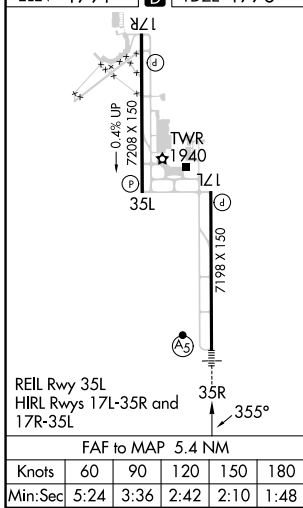
MISSED APPROACH: Climb to 3300 then climbing right turn to 4000 direct TOMHI LOM/INT/I-ABI 6.8 DME and hold.

For inop ALS, increase S-ILS 35R Cat E visibility to RVR 4000, and S-LOC 35R Cat C/D/E visibility to 1 3/4 SM.
** RVR 1800 authorized with use of FD or AP or HUD to DA.

ATIS 118.25	ABILENE APP CON 125.0 336.3 (EAST) 127.2 282.3 (WEST)	ABILENE TOWER 120.1 257.8	GND CON 121.7 348.6
-----------------------	---	-------------------------------------	-------------------------------



ELEV 1791	D	TDZE 1776
-----------	----------	-----------



CATEGORY	A	B	C	D	E
S-ILS 35R**	1976/24		200 (200-1/2)		
S-LOC 35R	2260/24	484 (500-1/2)	2260/50 484 (500-1)		
C CIRCLING	2300-1 509 (600-1)	2320-1 529 (600-1)	2420-1 3/4 629 (700-1 3/4)	2460-2 669 (700-2)	2620-3 829 (900-3)

SC-2, 23 JAN 2025 to 20 FEB 2025

SC-2, 23 JAN 2025 to 20 FEB 2025