

LOC/DME I-EMB 109.75 Chan 34 (Y)	APP CRS 175°	Rwy ldg TDZE Apt Elev 7202 1771 1791
--	------------------------	--

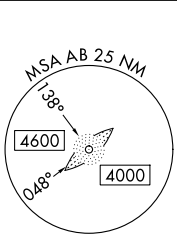
LOC RWY 17R

ABILENE RGNL (ABI)

ADF required for missed approach.

MISSED APPROACH: Climb to 2800 then climbing left turn to 4000 direct TOMHI LOM and hold.

ATIS 118.25	ABILENE APP CON 125.0 338.3 (EAST) 127.2 282.3 (WEST)	ABILENE TOWER 120.1 257.8	GND CON 121.7 348.6
-----------------------	---	-------------------------------------	-------------------------------



Procedure NA for arrival on ABI VORTAC airway radials 037 CW 099.

ABILENE
113.7 ABI Chan 84

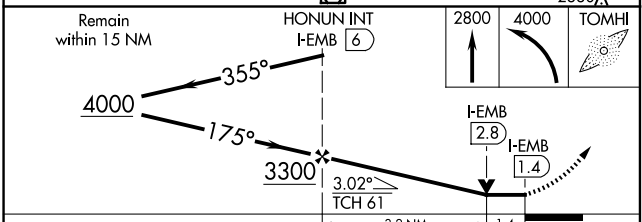
ALTERNATE MISSED APCH FIX ABILENE
113.7 ABI Chan 84

R-285 105° 285°

2917

Procedure NA for arrival on TQA VOR/DME airway radial 082.

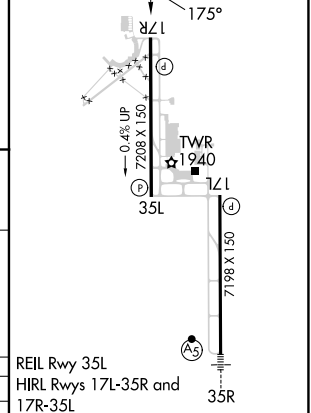
TUSCOLA
111.6 TQA Chan 53



LOCALIZER 109.75
I-EMB Chan 34(Y)

LOM TOMHI
353 AB

ELEV 1791	D TDZE 1771
-----------	--------------------



CATEGORY	A	B	C	D	E	
S-LOC 17R	2280-1	509 (500-1)	2280-1 ³ / ₈	509 (500-1 ³ / ₈)		
C CIRCLING	2300-1 509 (600-1)	2320-1 529 (600-1)	2420-1 ³ / ₄ 629 (700-1 ³ / ₄)	2460-2 669 (700-2)	2620-3 829 (900-3)	
	FAF to MAP 4.6 NM					
	Knots	60	90	120	150	180
	Min:Sec	4:36	3:04	2:18	1:50	1:32

SC-2, 23 JAN 2025 to 20 FEB 2025

SC-2, 23 JAN 2025 to 20 FEB 2025