

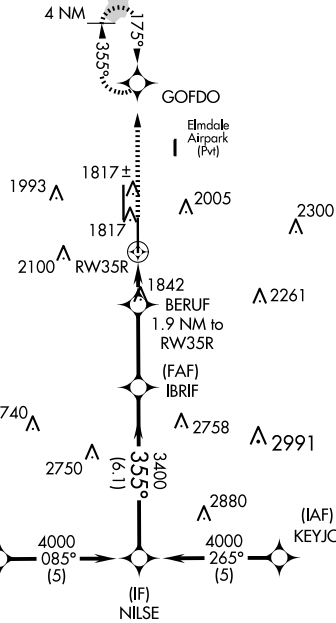
WAAS CH 97517 W35A	APP CRS 355°	Rwy Idg TDZE Apt Elev	7198 1776 1791
--	------------------------	-----------------------------	---

RNAV (GPS) RWY 35R

ABILENE RGNL (ABI)

RNP APCH.		MALSR	MISSED APPROACH: Climb to 4000 direct GOFDO and hold, continue climb-in-hold to 4000.
ATIS 118.25	ABILENE APP CON 125.0 338.3 (EAST) 127.2 282.3 (WEST)	ABILENE TOWER 120.1 257.8	GND CON 121.7 348.6

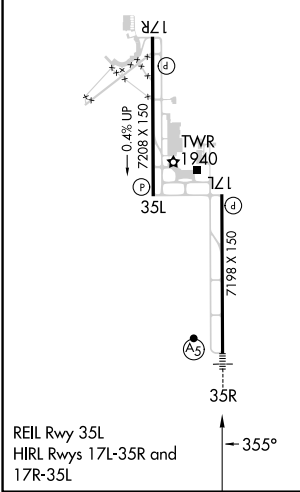
Procedure NA for arrival on ABI VORTAC airway radials 099 CW 195.



SC-2, 23 JAN 2025 to 20 FEB 2025

SC-2, 23 JAN 2025 to 20 FEB 2025

ELEV 1791	D	TDZE 1776
-----------	----------	-----------



4000	GOFDO	IBRIF	NILSE		
*LNAV only.	BERUF 1.9 NM to RW35R	3400	4000		
	*1.3 NM to RW35R	*2440	GP 3.00° TCH 58		
	-1.3 NM	0.6	3 NM		
			6.1 NM		
CATEGORY	A	B	C	D	E
LPV	DA**	1976/24 200 (200-½)			
LNAV/VNAV	DA	2189/40 413 (400-¾)			2189/50 413 (400-1)
LNAV MDA	2260/24 484 (500-½)		2260/50 484 (500-1)		
C CIRCLING	2300-1 509 (600-1)	2320-1 529 (600-1)	2420-1¾ 629 (700-1¾)	2460-2 669 (700-2)	2620-3 829 (900-3)