

CLOUD-FOUR ALPHA DEPARTURE (CLOUA4•CLOUD)

ALAMOGORDO, NEW MEXICO

ATIS ★ 273.5
 CLNC DEL
 126.7 289.4
 GND CON
 127.05 275.8
 TOWER ★
 119.3 254.4
 DEP CON
 128.1 284.0
 ALBUQUERQUE CENTER
 132.65 257.6

AL-7 [USAF]

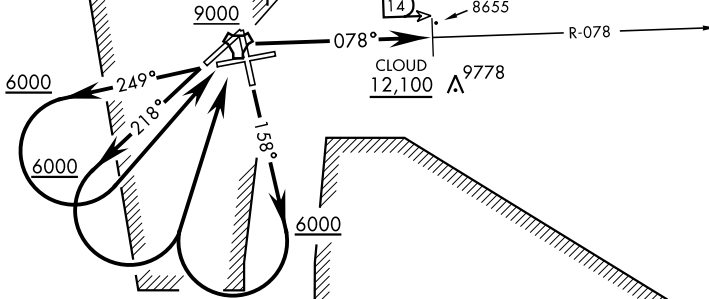
| Rwy | Knots | 60 | 120 | 180 | 240 | 300 | 360 |
|-------|----------|-----|-----|------|------|------|------|
| 16/25 | V/V(fpm) | 450 | 900 | 1350 | 1800 | 2250 | 2270 |
| 22 | V/V(fpm) | 440 | 880 | 1320 | 1760 | 2200 | 2640 |

Minimum climb to 12,100

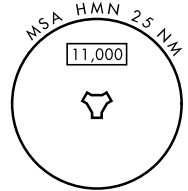
BEAK B MOA

BEAK C MOA

HOLLOMAN
 Chan 92 HMN



**RADAR REQUIRED WHEN
 R-5103C NOT UNDER
 HOLLOMAN APPROACH
 OR CHEROKEE
 CONTROL**



DEPARTURE ROUTE DESCRIPTION

TAKEOFF RWY 16: Climb on track 158°. When leaving 6000 turn right direct HMN TACAN, then proceed via HMN R-078 to CLOUD (HMN R-078/14), then via assigned routing. Cross HMN at or above 9000. Cross CLOUD at or above 12,100.

TAKEOFF RWY 22: Climb on track 218°. When leaving 6000 turn left direct HMN TACAN, then proceed via HMN R-078 to CLOUD (HMN R-078/14), then via assigned routing. Cross HMN at or above 9000. Cross CLOUD at or above 12,100.

TAKEOFF RWY 25: Climb on track 249°. When leaving 6000 turn left direct HMN TACAN, then proceed via HMN R-078 to CLOUD (HMN R-078/14), then via assigned routing. Cross HMN at or above 9000. Cross CLOUD at or above 12,100.

CLOUD-FOUR ALPHA DEPARTURE (CLOUA4•CLOUD)

ALAMOGORDO, NEW MEXICO

HOLLOMAN AFB (KHMN)