

DIEZL ONE DEPARTURE

AL-7 [USAF]

HOLLOMAN AFB (KHMN)
ALAMOGORDO, NEW MEXICO

ATIS ★ 273.5
 CLNC DEL
 126.7 289.4
 GND CON
 127.05 275.8
 TOWER ★
 119.3 254.4
 DEP CON
 128.1 284.0
 ALBUQUERQUE CENTER
 132.65 257.6

RADAR required

Rwy	Knots	60	120	180	240	300	360
04 (A)	V/V(fpm)	350	700	1050	1400	1750	2100
16 (B)	V/V(fpm)	492	984	1476	1968	2460	2952
34 (C)	V/V(fpm)	350	700	1050	1400	1750	2100

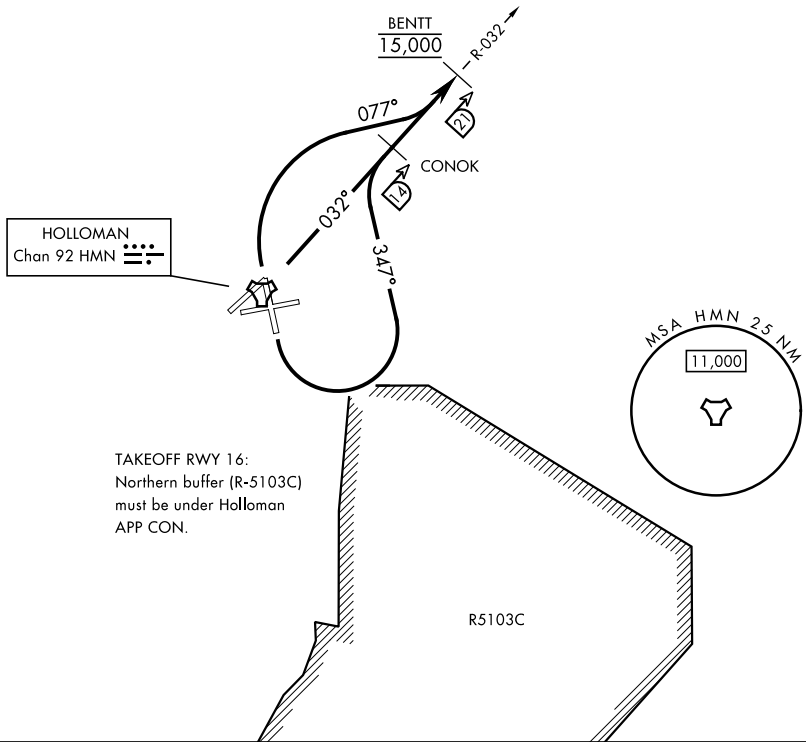
Minimum Climb Rate

11,929

(A) to 9300

(B) to 11,700

MILITARY USE ONLY



TAKEOFF RWY 16:
 Northern buffer (R-5103C)
 must be under Holloman
 APP CON.

SW-1, 23 JAN 2025 to 20 FEB 2025

SW-1, 23 JAN 2025 to 20 FEB 2025



DEPARTURE ROUTE DESCRIPTION

TAKEOFF RWY 4: Climb direct BENTT, cross BENTT at 15,000.

TAKEOFF RWY 16: Climbing left turn to track 347°, intercept HMN R-032 direct CONOK, depart CONOK direct BENTT. Cross BENTT at 15,000.

TAKEOFF RWY 34: Climbing right turn on track 077°, intercept HMN R-032 direct BENTT, cross BENTT at 15,000.

DIEZL ONE DEPARTURE

Amdt 1 10AUG23

ALAMOGORDO, NEW MEXICO
HOLLOMAN AFB (KHMN)