

HI-ILS or LOC Z RWY 16

LOC I-MUK 108.9	APCH CRS 158°	Rwy ldg 12,134 TDZE 4083 Arprt Elev 4093
---------------------------	-------------------------	---

AL-7 [USAF]

HOLLOMAN AFB (KHMN)

RADAR or DME required.



MISSED APPROACH: Climb straight ahead to 7000, passing 5000 turn right and intercept HMN R-320 outbound to JOBAM and hold.

When ALS inop, increase CAT CDE vis to 3/4 mile.
 **When ALS inop, increase CAT CDE vis to 1 1/8 miles.

ATIS ★ 273.5	ALBUQUERQUE CENTER 132.65 257.6	APP CON 120.6 269.225	TOWER ★ 119.3 254.4	GND CON 127.05 275.8	CLNC DEL 126.7 289.4
------------------------	---	---------------------------------	-------------------------------	--------------------------------	--------------------------------

When circling to Rwy 25 at Night, operational VGSI required, remain on or above VGSI glidepath until threshold.

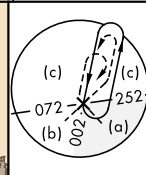
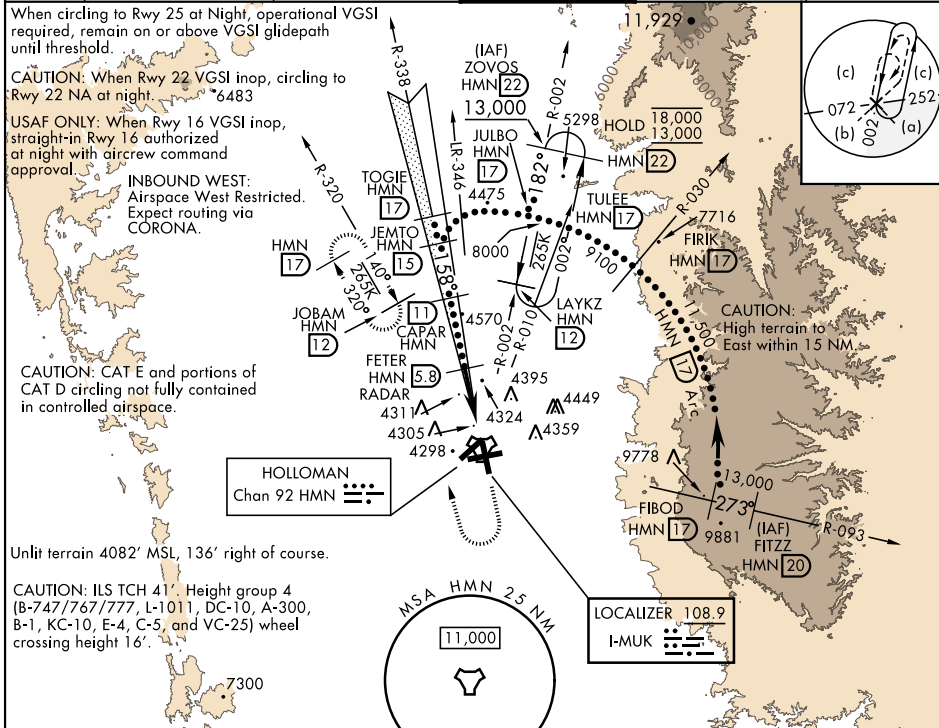
CAUTION: When Rwy 22 VGSI inop, circling to Rwy 22 NA at night. *6483

USAF ONLY: When Rwy 16 VGSI inop, straight-in Rwy 16 authorized at night with aircrew command approval.

INBOUND WEST:
Airspace West Restricted.
Expect routing via CORONA.

CAUTION: CAT E and portions of CAT D circling not fully contained in controlled airspace.

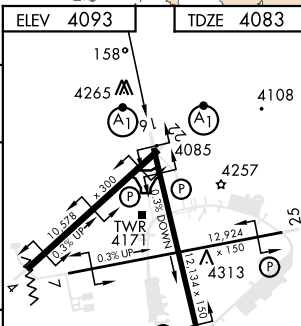
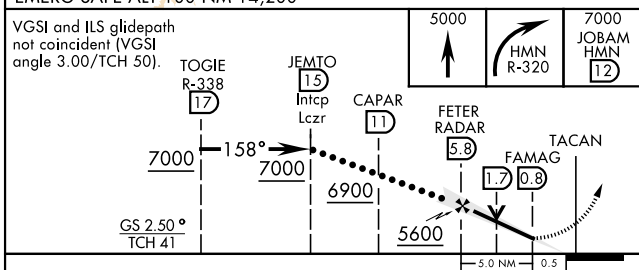
Unlit terrain 4082' MSL, 136' right of course.
 CAUTION: ILS TCH 41. Height group 4 (B-747/767/777, L-1011, DC-10, A-300, B-1, KC-10, E-4, C-5, and VC-25) wheel crossing height 16'.



SW-1, 23 JAN 2025 to 20 FEB 2025

SW-1, 23 JAN 2025 to 20 FEB 2025

ELEV 4093	TDZE 4083
-----------	-----------



CATEGORY	C	D	E
S-ILS 16 *	4283-1/2	200	(200-1/2)
S-LOC 16 **	4600-1	517	(600-1)
CIRCLING	4680-1 1/2 587 (600-1 1/2)	4740-2 647 (700-2)	4780-2 1/2 687 (700-2 1/2)

HIRL all rwys REIL Rwy 22					
FAF to MAP 5.0 NM					
Knots	120	140	160	180	200
Min:Sec	2:30	2:09	1:53	1:40	1:30

HI-ILS or LOC Z RWY 16