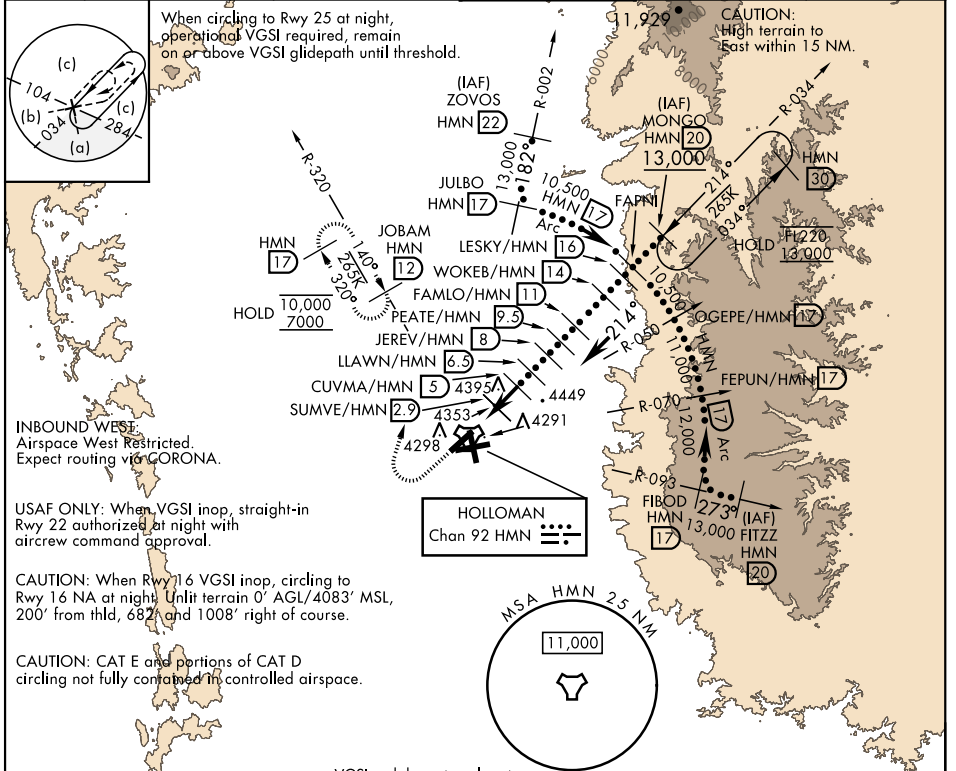


HI-TACAN RWY 22

TACAN HMN Chan 92	APCH CRS 214°	Rwy ldg 10,578 TDZE 4083 Arpt Elev 4093	AL-7 [USAF]	HOLLOMAN AFB (KHMN)	
▽ *When ALS inop, increase CAT CDE vis to 1½ miles. When VGSI inop, procedure NA at night.			ALSF-1 	MISSED APPROACH: Climb straight ahead to 7000, passing 5000 turn right and intercept HMN TACAN R-320 outbound to JOBAM and hold.	
ATIS ★ 273.5	ALBUQUERQUE CENTER 132.65 257.6	APP CON 120.6 269.225	TOWER ★ 119.3 254.4	GND CON 127.05 275.8	CLNC DEL 126.7 289.4



SW-1, 23 JAN 2025 to 20 FEB 2025

SW-1, 23 JAN 2025 to 20 FEB 2025

EMERG SAFE ALT 100 NM 14,200	VGSI and descent angle not coincident, VGSI angle 2.50°/TCH 53.	ELEV 4093	TDZE 4083												
		<table border="1"> <tr> <th>CATEGORY</th> <th>C</th> <th>D</th> <th>E</th> </tr> <tr> <td>S-22 *</td> <td>4620-1</td> <td>537 (600-1)</td> <td></td> </tr> <tr> <td>CIRCLING</td> <td>4680-1½ 587 (600-1½)</td> <td>4720-2 647 (700-2)</td> <td>4780-2½ 687 (700-2½)</td> </tr> </table>		CATEGORY	C	D	E	S-22 *	4620-1	537 (600-1)		CIRCLING	4680-1½ 587 (600-1½)	4720-2 647 (700-2)	4780-2½ 687 (700-2½)
CATEGORY	C	D	E												
S-22 *	4620-1	537 (600-1)													
CIRCLING	4680-1½ 587 (600-1½)	4720-2 647 (700-2)	4780-2½ 687 (700-2½)												
HIRL all rwys REIL Rwy 22															

HI-TACAN RWY 22