

ALAMOGORDO, NEW MEXICO

RNAV (GPS) RWY 16

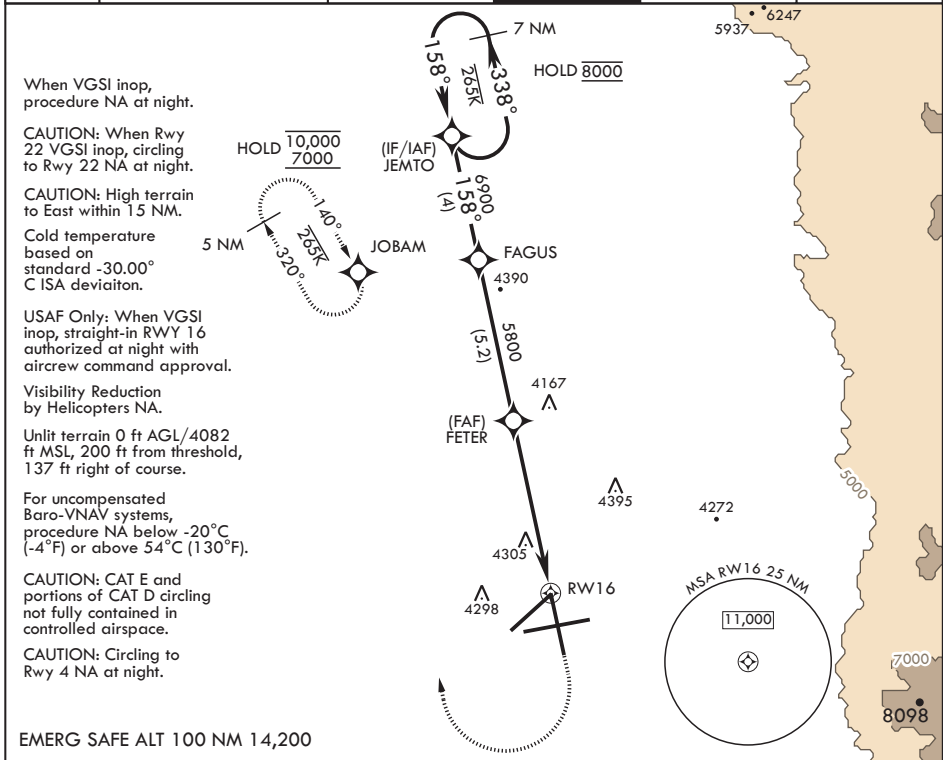
APCH CRS 158°	Rwy Idg 12,134
	TDZE 4083
	Arprt Elev 4093

AL-7 (USAF)

HOLLOMAN AFB (KHMN)

RNP APCH-GPS	ALSF-1	MISSED APPROACH: Climb straight ahead to 7000, passing 5000 turn direct JOBAM, do not exceed 265 KIAS until turn completion and hold.
<p>* When ALS inop, increase vis to 1 3/8 miles. ** When ALS inop, increase CAT AB vis to 1 mile; CAT CDE vis to 1 3/8 miles.</p>		

ATIS★ 273.5	ALBUQUERQUE CENTER 132.65 257.6	APP CON 120.6 269.225	TOWER★ 119.3 254.4	GND CON 127.05 275.8	CLNC DEL 126.7 289.4
-----------------------	---	---------------------------------	------------------------------	--------------------------------	--------------------------------



When VGSI inop, procedure NA at night.

CAUTION: When Rwy 22 VGSI inop, circling to Rwy 22 NA at night.

CAUTION: High terrain to East within 15 NM.

Cold temperature based on standard -30.00° C ISA deviation.

USAF Only: When VGSI inop, straight-in RWY 16 authorized at night with aircrew command approval.

Visibility Reduction by Helicopters NA.

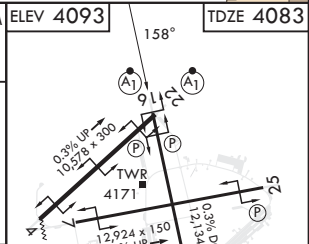
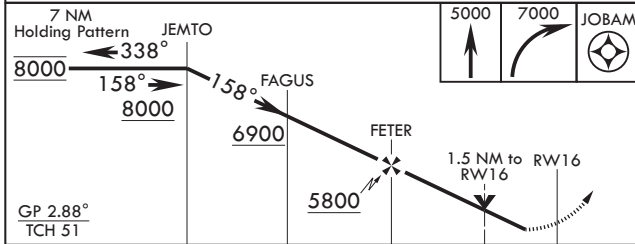
Unlit terrain 0 ft AGL/4082 ft MSL, 200 ft from threshold, 137 ft right of course.

For uncompensated Baro-VNAV systems, procedure NA below -20°C (-4°F) or above 54°C (130°F).

CAUTION: CAT E and portions of CAT D circling not fully contained in controlled airspace.

CAUTION: Circling to Rwy 4 NA at night.

EMERG SAFE ALT 100 NM 14,200



CATEGORY	A	B	C	D	E
LNAV/VNAV DA*	4569-1		486	(500-1)	
LNAV MDA**	4600-¾ 517 (600-¾)		4600-1	517	(600-1)
C CIRCLING	4640-1 547 (600-1)		4680-1½ 587 (600-1½)	4740-2 647 (700-2)	4780-2½ 687 (700-2½)

HIRL all Rwys
REIL Rwy 22

ALAMOGORDO, NEW MEXICO

32°52'N - 106°06'W

HOLLOMAN AFB (KHMN)

Amdt 2 05OCT23

RNAV (GPS) RWY 16

SW-1, 23 JAN 2025 to 20 FEB 2025

SW-1, 23 JAN 2025 to 20 FEB 2025