

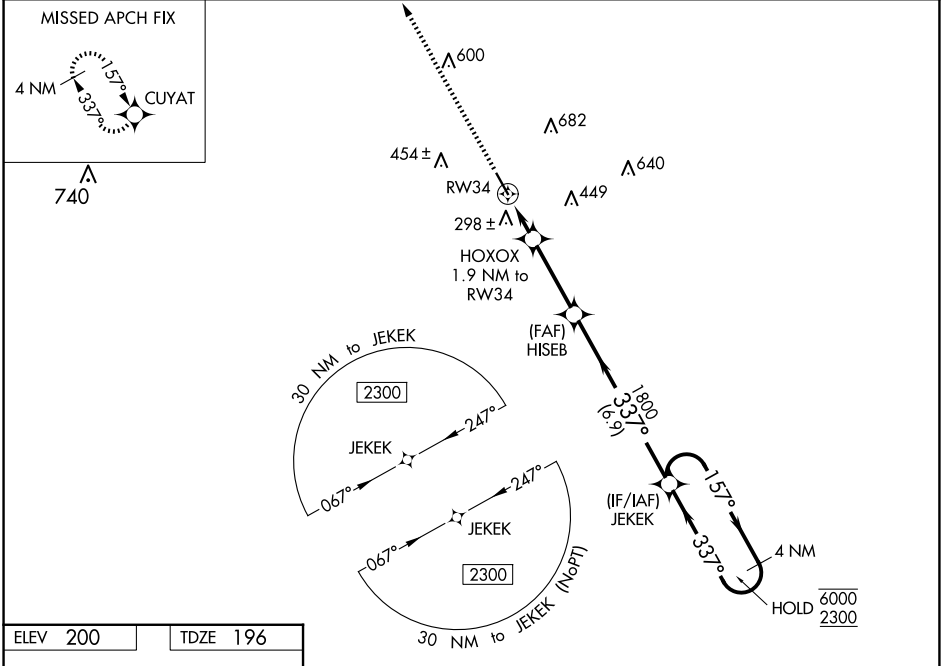
WAAS CH 70635 W34A	APP CRS 337°	Rwy Idg TDZE 196 Apt Elev 200	5000
--	------------------------	---	-------------

RNAV (GPS) RWY 34

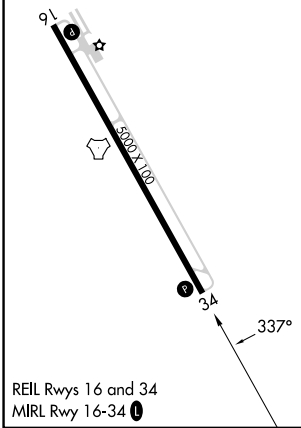
BACON COUNTY (AMG)

RNP APCH-GPS.	MISSED APPROACH: Climb to 2300 direct CUYAT and hold.
<p>▼ Rwy 34 helicopter visibility reduction below 3/4 SM NA. ▲ For uncompensated Baro-VNAV systems, LNAV/VNAV NA below -4°C or above 54°C.</p>	

ASOS 118.325	JACKSONVILLE CENTER 127,575 269,025	UNICOM 122.7 (CTAF) 1
------------------------	---	---------------------------------



ELEV 200	TDZE 196
-----------------	-----------------



2300	CUYAT	VGSi and RNAV glidepath not coincident (VGSi Angle 3.00/TCH 30).				4 NM Holding Pattern
		HOXOX 1.9 NM to RWY 34	HISEB 1800	JEKEK	157° → 6000	← 337° 2300
		1.1 NM to RWY 34	1800		GP 3.00° TCH 40	
		1.1	0.8	3.1 NM	6.9 NM	
CATEGORY	A	B	C	D		
LPV DA	452-7/8		256 (300-7/8)			
LNAV/VNAV DA	459-7/8		263 (300-7/8)			
LNAV MDA	560-1		364 (400-1)			
<input checked="" type="checkbox"/> CIRCLING	720-1	520 (600-1)	1000-2 1/4 800 (800-2 1/4)	1000-2 1/2 800 (800-2 1/2)		

SE-4, 23 JAN 2025 to 20 FEB 2025

SE-4, 23 JAN 2025 to 20 FEB 2025