

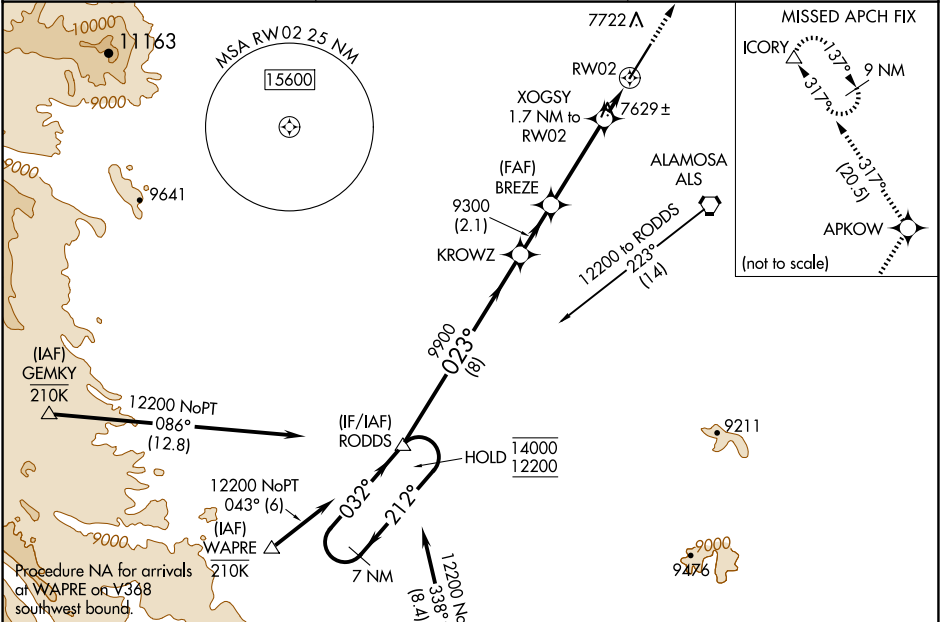
WAAS CH <b>90410</b> <b>W02A</b>	APP CRS <b>023°</b>	Rwy Idg TDZE <b>7540</b> Apt Elev <b>7540</b>
--	------------------------	---

# RNAV (GPS) RWY 2

SAN LUIS VALLEY RGNL/BERGMAN FLD (ALS)

RNP APCH-GPS. ▼ For uncompensated Baro-VNAV systems, LNAV/VNAV NA below -31°C or above 54°C. For inop ALS, increase LNAV/VNAV all Cats visibility to ¾ SM. ⚠ -26°C	MALSR AS	MISSED APPROACH: Climb to 14600 direct APKOW and on track 317° to ICORY and hold, continue climb-in-hold to 14600.
--	-------------	--

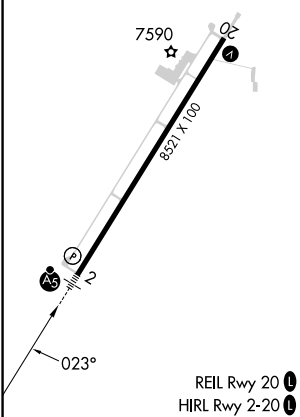
ASOS <b>135.175</b>	DENVER CENTER <b>128.375 379.95</b>	UNICOM <b>122.8 (CTAF) 0</b>
------------------------	--	---------------------------------



SW-1, 23 JAN 2025 to 20 FEB 2025

SW-1, 23 JAN 2025 to 20 FEB 2025

ELEV 7540	<b>D</b>	TDZE 7540
-----------	----------	-----------



7 NM Holding Pattern	KROWZ	BREZE	APKOW	ICORY
14000 ← 212°	9300	9300	14600	14600
12200 032° →	9900	8140	317°	317°
GP 3.00°	8 NM	2.1 NM	3.6 NM	0.8 NM
TCH 48				0.9 NM

CATEGORY	A	B	C	D
LPV DA		7740-½	200 (200-½)	
LNAV/VNAV DA		7790-½	250 (300-½)	
LNAV MDA		7880-½	340 (400-½)	
<b>CIRCLING</b>	8040-1	500 (500-1)	8080-1½ 540 (600-1½)	8100-2 560 (600-2)