

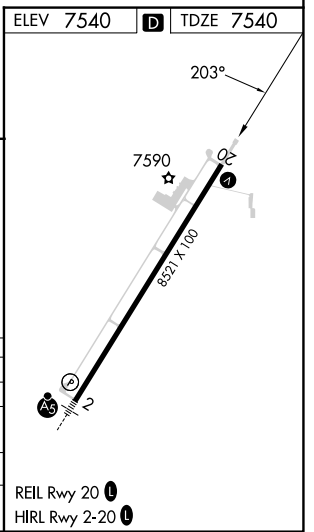
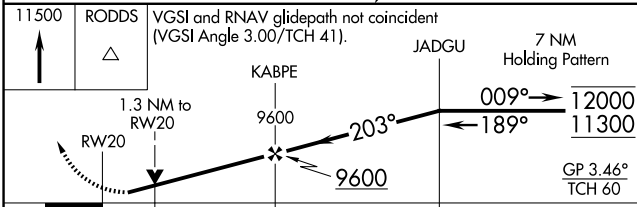
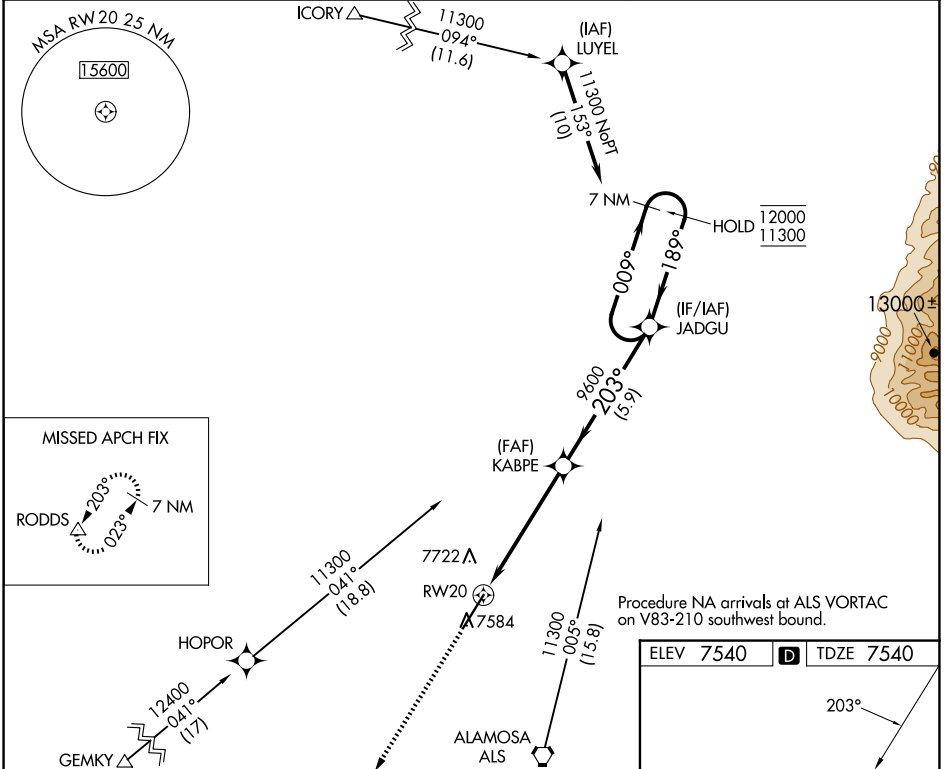
WAAS CH 93500 W20A	APP CRS 203°	Rwy Idg 8519 TDZE 7540 Apt Elev 7540
--	------------------------	---

RNAV (GPS) RWY 20

SAN LUIS VALLEY RGNL/BERGMAN FLD (ALS)

RNP APCH-GPS.	MISSED APPROACH: Climb to 11500 direct RODDS and hold, continue climb-in-hold to 11500.
Rwy 20 helicopter visibility reduction below 3/4 SM NA. For uncompensated Baro-VNAV systems, LNAV/VNAV NA below -31°C or above 54°C.	

ASOS 135.175	DENVER CENTER 128.375 379.95	UNICOM 122.8 (CTAF) 0
------------------------	--	---------------------------------



11500 RODDS VGS1 and RNAV glidepath not coincident (VGS1 Angle 3.00/TCH 41).	JADGU 7 NM Holding Pattern KABPE 9600 RWY 20 7584 ALAMOSA ALS 11300			
1.3 NM to RWY 20 1.3 NM 4.1 NM 5.9 NM				
CATEGORY	A	B	C	D
LPV DA		7812-7/8	272 (300-7/8)	
LNAV/VNAV DA		7810-7/8	270 (300-7/8)	
LNAV MDA	8000-1	460 (500-1)	8000-1 3/8	460 (500-1 3/8)
CIRCLING	8040-1	500 (500-1)	8080-1 1/2	8100-2
			540 (600-1 1/2)	560 (600-2)

SW-1, 23 JAN 2025 to 20 FEB 2025

SW-1, 23 JAN 2025 to 20 FEB 2025