

HI-VOR or TACAN RWY 22

VORTAC PNH 116.6 Chan 113	APCH CRS 235°	Rwy Idg 13,502 TDZE 3606 Arpt Elev 3607
---	-------------------------	--

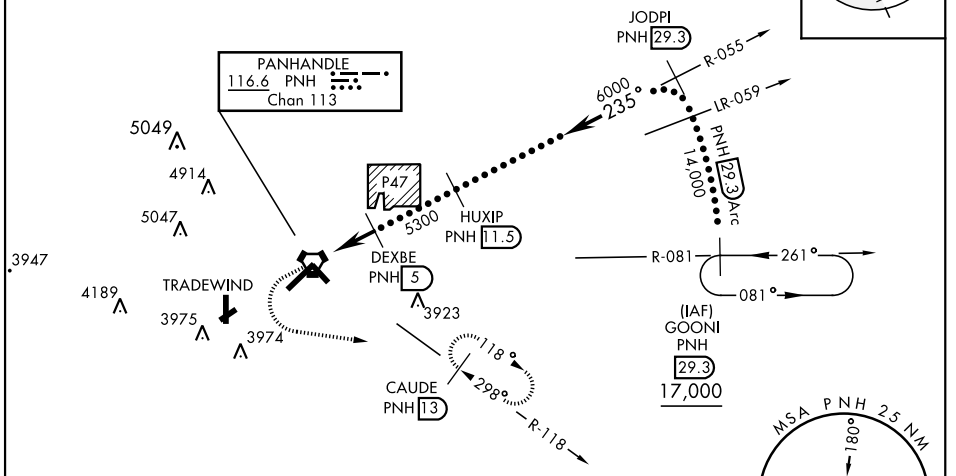
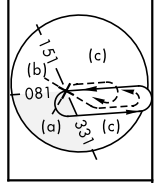
[USAF]

RICK HUSBAND AMARILLO INTL (KAMA)

DME required	MALSR	MISSED APPROACH: Climb to 4100 then climbing left turn to 5000 on heading 090° and PNH VORTAC R-118 to CAUDE and hold.
--------------	-------	--

ATIS 118.85 350.3	AMARILLO APP CON 119.5 307.0	AMARILLO TOWER ★ 118.3 (CTAF) 0 257.9	GND CON 121.9 348.6	CLNC DEL 121.65 239.275	ASR
-----------------------------	--	---	-------------------------------	-----------------------------------	-----

When local altimeter setting not received, use Borger altimeter setting.

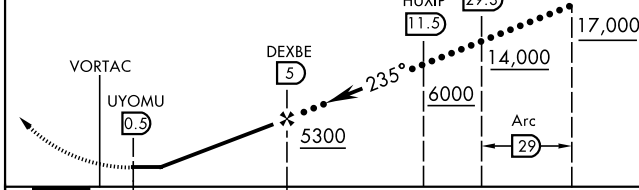


SC-2, 23 JAN 2025 to 20 FEB 2025

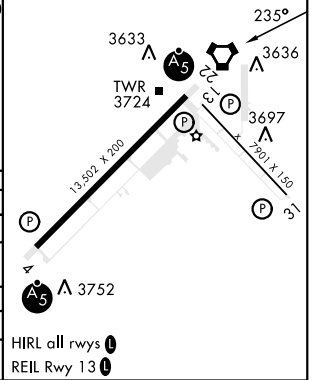
SC-2, 23 JAN 2025 to 20 FEB 2025

EMERG SAFE ALT 100 NM 7500

4100	5000	CLAUDE PNH 13	VGSI and Descent angles not coincident	JODPI R-055 29.3	GOONI R-081 29.3
------	------	---------------	--	------------------	------------------



ELEV 3607	TDZE 3606
-----------	-----------



CATEGORY	C	D	E
S-22 *		4000-5/8 394 (400-3/8)	
CIRCLING	4240-13/4 633 (700-13/4)	4280-21/4 673 (700-21/4)	4460-3 853 (900-3)
BORGER ALTIMETER SETTING			
S-22 **		4160-11/8 554 (600-11/8)	
CIRCLING	4400-21/4 793 (800-21/4)	4420-23/4 813 (900-23/4)	4620-3 1013 (1100-3)

HI-VOR or TACAN RWY 22