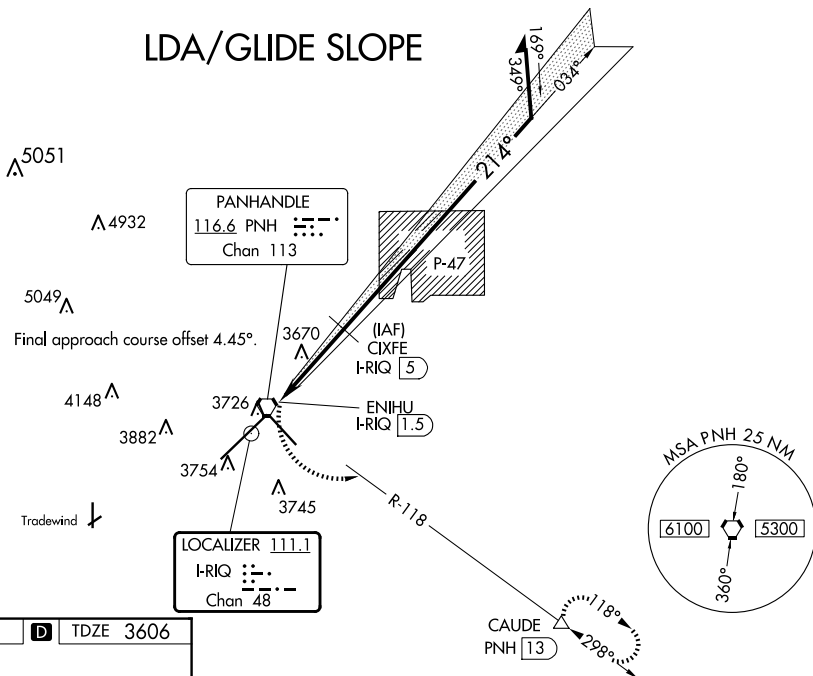


LOC/DME I-RIQ 111.1 Chan 48	APP CRS 214°	Rwy Idg 13502 TDZE 3606 Apt Elev 3607
---	------------------------	--

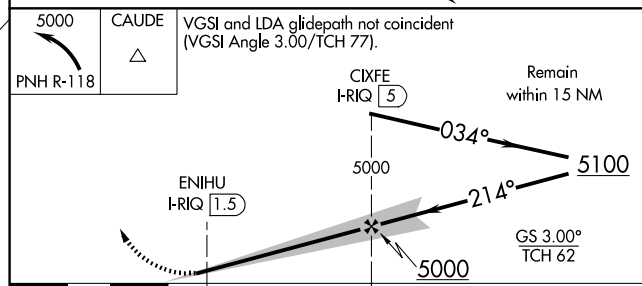
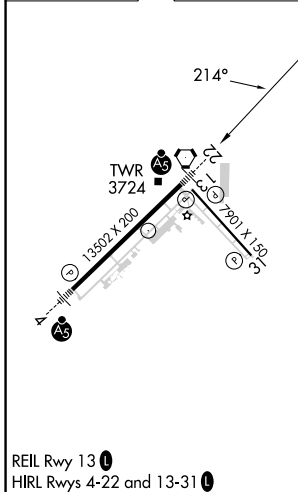
LDA RWY 22
RICK HUSBAND AMARILLO INTL (AMA)

RADAR required for procedure entry.		MALS R	MISSED APPROACH: Climbing left turn to 5000 on PNH VORTAC R-118 to CAUDE and hold.					
⚠ For inop ALS, increase LDA/GS-22 all Cats visibility to ¾ SM; increase LDA-22 Cat C/D/E visibility to ⅞ SM. Final approach course offset 4.45 degrees intersects the runway centerline 2509' from Rwy 22 thld. ASR		⚠ 45 160'	ATIS 118.85 350.3	AMARILLO APP CON* 119.5 307.0	AMARILLO TOWER* 118.3(CTAF) 257.9	GND CON 121.9 348.6	CLNC DEL 121.65 239.275	UNICOM 122.95

LDA/GLIDE SLOPE



ELEV 3607	D	TDZE 3606
-----------	---	-----------



CATEGORY	A	B	C	D	E
S-LDA/GS 22	3856-½ 250 (300-½)				
S-LDA 22	3920-½	314 (400-½)		3920-¾	314 (400-¾)
CIRCLING	4080-1	473 (500-1)	4240-1¾ 633 (700-1¾)	4280-2¼ 673 (700-2¼)	4460-3 853 (900-3)

SC-2, 23 JAN 2025 to 20 FEB 2025

SC-2, 23 JAN 2025 to 20 FEB 2025