

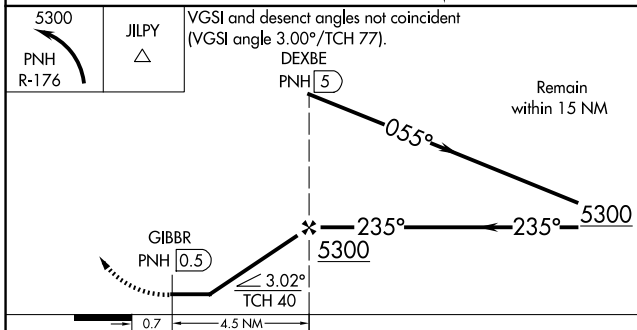
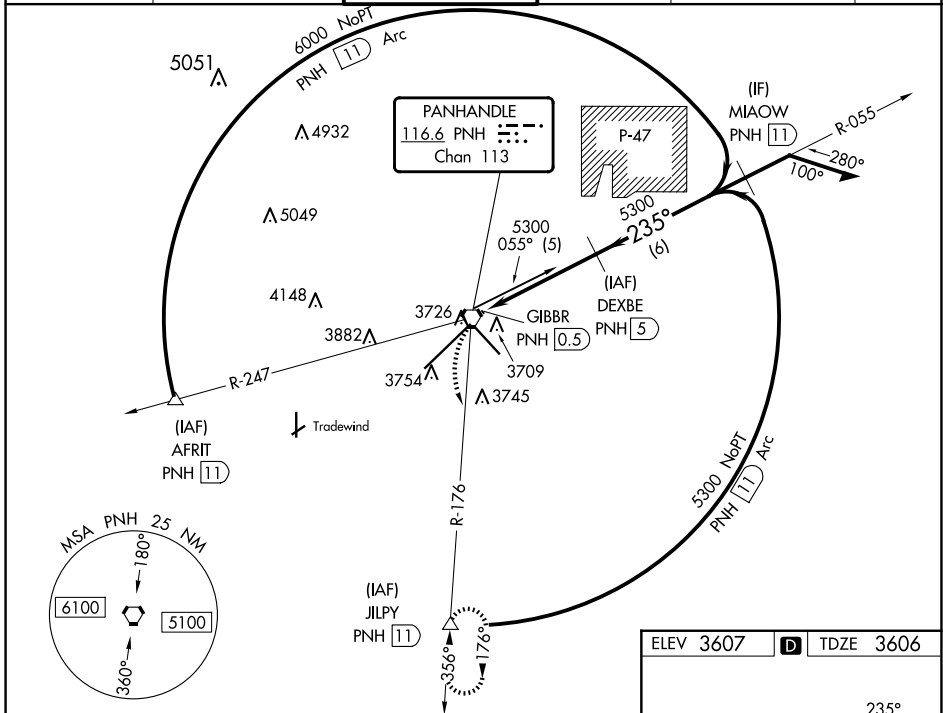
VORTAC PNH <b>116.6</b> Chan <b>113</b>	APP CRS <b>235°</b>	Rwy Idg <b>13502</b> TDZE <b>3606</b> Apt Elev <b>3607</b>
---	------------------------	--

# VOR RWY 22

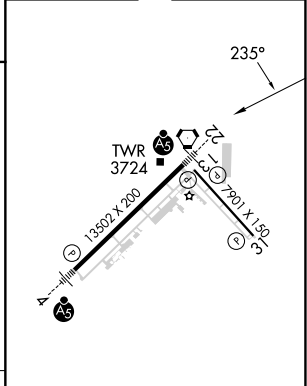
RICK HUSBAND AMARILLO INTL (AMA)

DME required. For inop ALS, increase Cat C visibility to 1 SM.		MALSR	MISSED APPROACH: Climbing left turn to 5300 on PNH R-176 to JILPY/11 DME and hold.		
---	--	-------	--	--	--

ATIS <b>118.85 350.3</b>	AMARILLO APP CON* <b>119.5 307.0</b>	AMARILLO TOWER* <b>118.3 (CTAF) 257.9</b>	GND CON <b>121.9 348.6</b>	CLNC DEL <b>121.65 239.275</b>	UNICOM <b>122.95</b>
-----------------------------	---	--	-------------------------------	-----------------------------------	-------------------------



ELEV 3607	D	TDZE 3606
-----------	---	-----------



CATEGORY	A	B	C	D	E
S-22	3960-1/2 354 (400-1/2)		3960-3/4 354 (400-3/4)	3960-1 354 (400-1)	
<b>C</b> CIRCLING	4080-1 473 (500-1)		4240-1 3/4 633 (700-1 3/4)	4280-2 1/4 673 (700-2 1/4)	4460-3 853 (900-3)

REIL Rwy 13 **1**  
HIRL Rwys 4-22 and 13-31 **1**

SC-2, 23 JAN 2025 to 20 FEB 2025

SC-2, 23 JAN 2025 to 20 FEB 2025