

LOC I-LJU	APP CRS	Rwy Idg	<b>11800</b>
<b>108.5</b>	<b>245°</b>	TDZE	<b>624</b>
		Apr Elev	<b>633</b>

# ILS or LOC RWY 25

OSCODA/WURTSMITH (OSC)

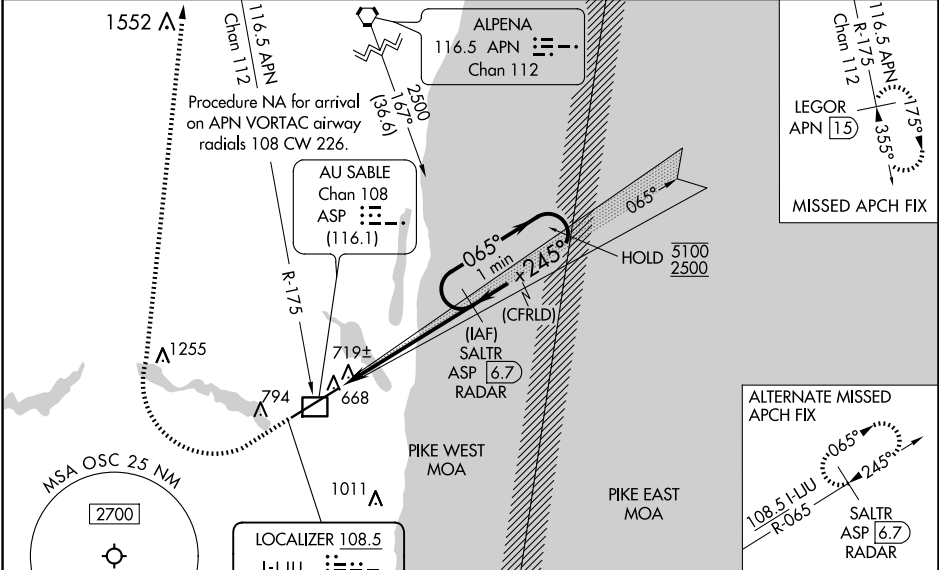
DME required.

**NA** Circling NA southeast of Rwy 7-25. For inop ALS, increase S-LOC Cats C and D visibility to 1 SM. DME from ASP DME. Simultaneous reception of I-LJU and ASP DME required.



MISSED APPROACH: Climb to 1300 then climbing right turn to 3000 on heading 030° and an APN VORTAC R-175 to LEGOR/APN 15 DME and hold.

AWOS-3 <b>118.7</b>	MINNEAPOLIS CENTER <b>125.475 269.45</b>	UNICOM <b>123.0 (CTAF) 0</b>
------------------------	---------------------------------------------	---------------------------------



ELEV 633	TDZE 624
----------	----------

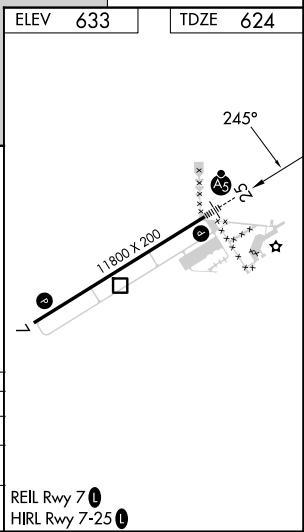
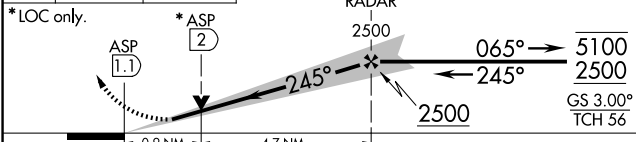
1300 3000  
hdg 030°  
APN R-175

LEGOR APN 15

VGSI and ILS glidepath not coincident (VGSI Angle 3.00/TCH 72).

SALTR ASP 6.7 RADAR

One Minute Holding Pattern



CATEGORY	A	B	C	D
S-ILS 25	824-1/2 200 (200-1/2)			
S-LOC 25	980-1/2 356 (400-1/2)		980-5/8 356 (400-5/8)	
<b>C</b> CIRCLING	1140-1 507 (600-1)		1300-2 667 (700-2)	

EC-1, 23 JAN 2025 to 20 FEB 2025

EC-1, 23 JAN 2025 to 20 FEB 2025