

VORTAC CEC <b>109.0</b> Chan 27	APP CRS <b>131°</b>	Rwy ldg TDZE Apt Elev <b>5002</b> <b>60</b> <b>61</b>
---------------------------------------	------------------------	--

# VOR RWY 12

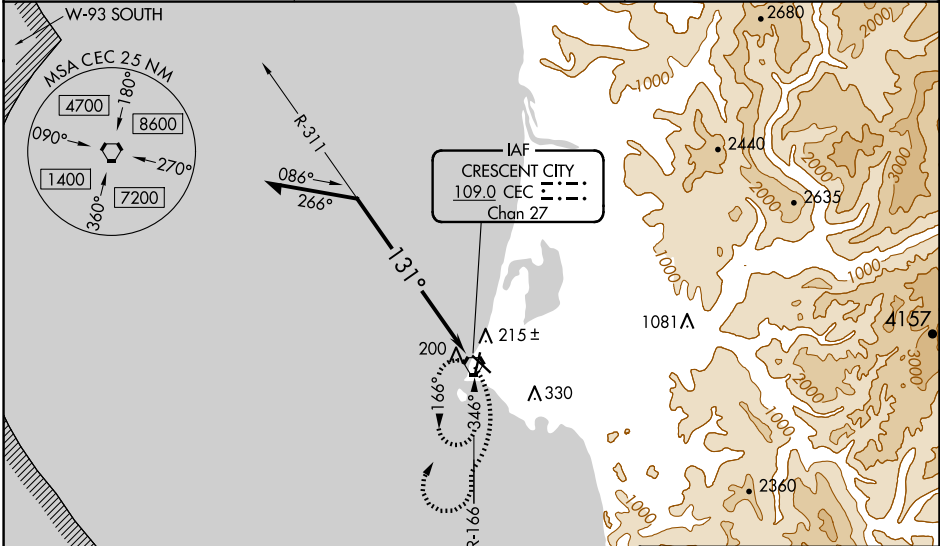
JACK MC NAMARA FLD (CEC)

⚠ When local altimeter setting not received, use Brookings altimeter setting and increase all MDA 100 feet; increase S-12 Cat C/D visibility 3/8 mile, Circling Cat D visibility 1/4 mile and Circling Cat C visibility 1/2 mile. For inop MALSR increase S-12 Cat A/B visibility to 1 mile, and Cat C/D visibility to 1 1/8 mile. For inop MALSR when using Brookings altimeter setting, increase S-12 Cat A/B visibility to 1 mile, and Cat C/D visibility to 1 1/8 mile. Night Landing: Rwy 36 operational VGSI required, remain on or above VGSI glidepath until threshold. Night Landing: Rwy 18, 30 NA.

MALSR

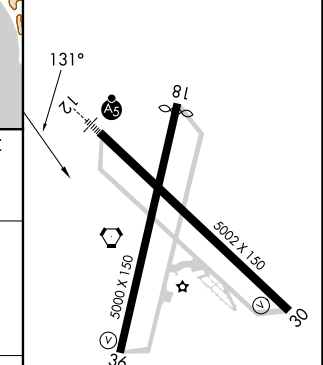
MISSED APPROACH: Climbing right turn to 3000 on CEC VORTAC R-166 then right turn direct CEC VORTAC and hold.

ASOS <b>119.925</b>	SEATTLE CENTER <b>124.85 306.3</b>	UNICOM <b>122.8 (CTAF)</b>
------------------------	---------------------------------------	-------------------------------



3000	CEC
CEC R-166	

ELEV 61		TDZE 60
---------	--	---------



CATEGORY	A	B	C	D
S-12	520-3/4	460 (500-3/4)	520-1	460 (500-1)
CIRCLING	540-1	479 (500-1)	640-1 1/2 579 (600-1 1/2)	640-2 579 (600-2)

HIRL Rwy 12-30

MIRL Rwy 18-36

REIL Rws 18, 30 and 36

SW-2, 23 JAN 2025 to 20 FEB 2025

SW-2, 23 JAN 2025 to 20 FEB 2025