

BANGOR, MAINE

# HI-ILS Z or LOC Z RWY 15

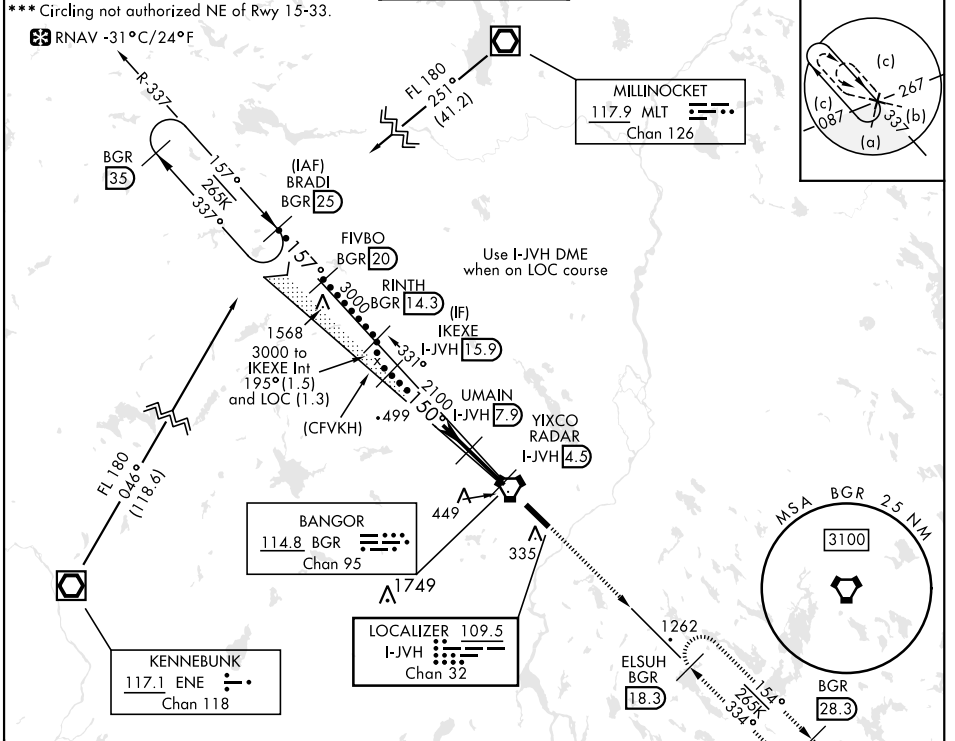
LOC/DME I-JVH <b>109.5</b> Chan <b>32</b>	APCH CRS <b>150°</b>	Rwy ldg <b>11,440</b> TDZE <b>192</b> Arprt Elev <b>192</b>
---	-------------------------	---

AL-39 [USAF]

BANGOR INTL (KBGR)

DME required.	ALSIF-2	MISSED APPROACH: Climb to 3000 via heading 150° and BGR VORTAC R-154 to ELSUH (R-154/18.3 DME) and hold.
---------------	---------	--

ATIS <b>127.75</b>	APP CON <b>118.925 239.3</b>	TOWER <b>120.7 233.7</b>	GND CON <b>121.9 348.6</b>	ASR
-----------------------	---------------------------------	-----------------------------	-------------------------------	-----



NE-1, 23 JAN 2025 to 20 FEB 2025

NE-1, 23 JAN 2025 to 20 FEB 2025

EMERG SAFE ALT 100 NM 7500			Use I-JVH DME when on LOC course		3000	ELSUH BGR 18.3
BRADI R-337 25	FIVBO BGR 20	RINTH BGR 14.3 (CFVKH)	IKEXE I-JVH 15.9	UMAIN I-JVH 7.9	BGR VORTAC	ELEV 192 TDZE 192
12,000	8000	5000	3000	2100	1000	150° 5.9 NM From FAF
VGSI and ILS GS not coincident			GS 3.00° TCH 50			
			3.4 NM		2.5 NM	
CATEGORY	C	D	E			
S-ILS 15*	392/18	200	(200-½)			
S-LOC 15**	660/50	468	(500-1)			
CIRCLING***	740-1½ 548 (600-1½)	820-2 628 (700-2)	880-2½ 688 (700-2½)		TDZL/CL Rwy 15 HIRL Rwy 15-33	

BANGOR, MAINE      44°48'N-68°50'W      BANGOR INTL (KBGR)

# HI-ILS Z or LOC Z RWY 15