


WAAS CH 78007 W33A	APP CRS 330°	Rwy Idg 11440 TDZE 163 Apt Elev 192
--	------------------------	--

RNAV (GPS) RWY 33

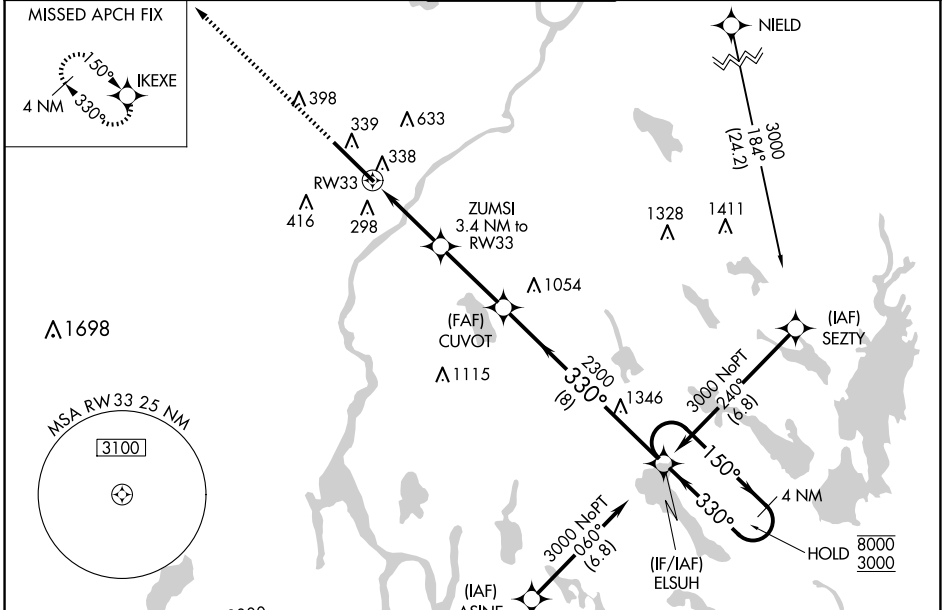
BANGOR INTL (BGR)

RNP APCH.

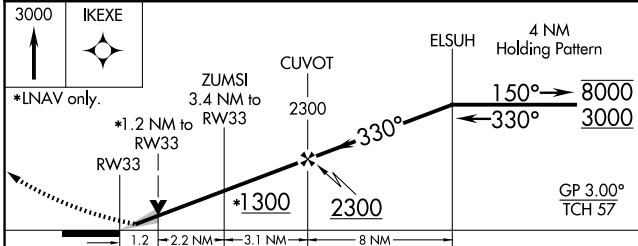
⚠ Circling NA northeast of Rwy 15 and 33. For uncompensated Baro-VNAV systems, LNAV/VNAV NA below -18°C or above 54°C. For inop ALS, increase LPV Cat E visibility to RVR 4000, LNAV/VNAV Cat E visibility to RVR 5500, and LNAV Cat E visibility to 1¼ SM.
⚠ **RVR 1800 authorized with use of FD or AP or HUD to DA.

MALSR  **MISSED APPROACH:**
Climb to 3000 direct IKEXE and hold.

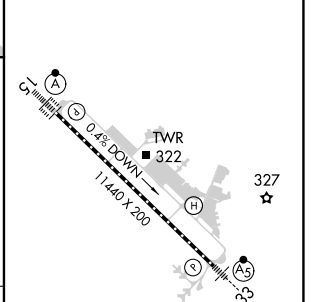
ATIS 127.75	BANGOR APP CON 118.925 239.3	BANGOR TOWER 120.7 233.7	GND CON 121.9 348.6	CLNC DEL 135.9 348.6
-----------------------	--	------------------------------------	-------------------------------	--------------------------------



YOSTT  3000 099° (36.5)



ELEV 192	D	TDZE 163
----------	----------	----------



CATEGORY	A	B	C	D	E
LPV DA**	363/24		200 (200-½)		
LNAV/VNAV DA	519/30		356 (400-¾)		
LNAV MDA	600/24 437 (500-½)		600/40 437 (500-¾)		
C CIRCLING	640-1 448 (500-1)	720-1 528 (600-1)	740-1½ 548 (600-1½)	820-2 628 (700-2)	880-2½ 688 (700-2½)

GP 3.00° TCH 57
TDZ/CL Rwy 15 HIRL Rwy 15-33

NE-1, 23 JAN 2025 to 20 FEB 2025

NE-1, 23 JAN 2025 to 20 FEB 2025