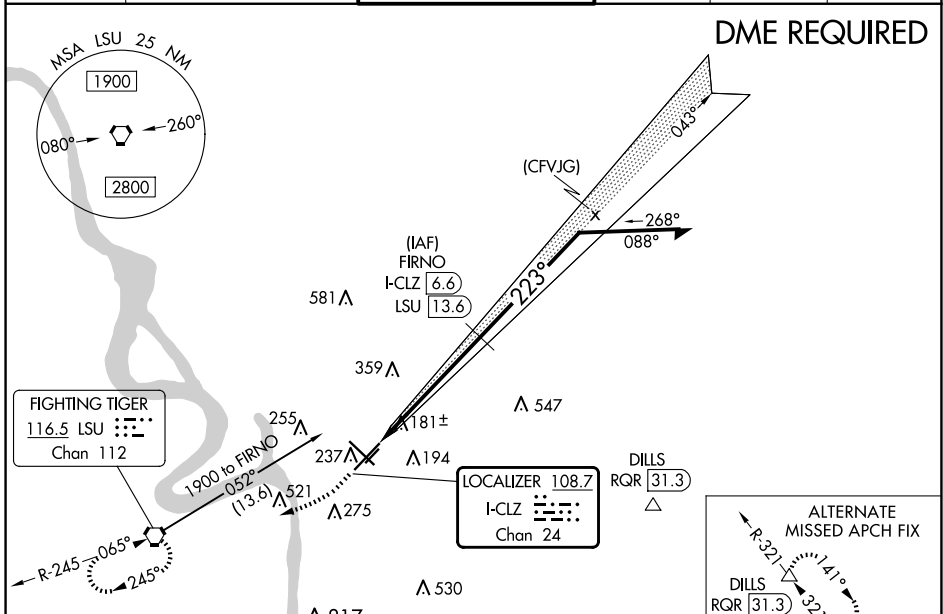


LOC/DME I-CLZ <b>108.7</b> Chan <b>24</b>	APP CRS <b>223°</b>	Rwy Idg <b>7500</b> TDZE <b>70</b> Apt Elev <b>70</b>
---	------------------------	---

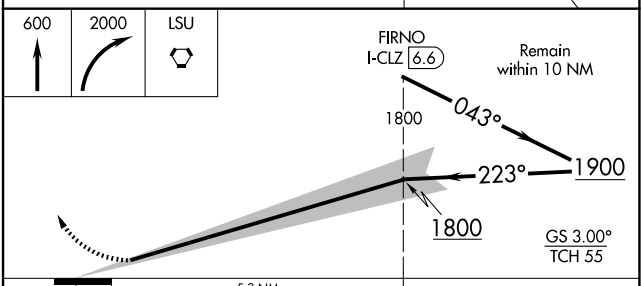
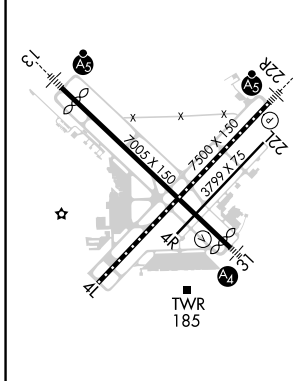
# ILS RWY 22R (SA CAT I & II)

BATON ROUGE METRO, RYAN FLD (BTR)

<p><b>⚠</b> SA CAT I: Requires specific OPSPEC, MSPEC, or LOA approval and use of HUD to DH.</p> <p><b>⚠</b> SA CAT II: Reduced lighting: Requires specific OPSPEC, MSPEC, or LOA approval and use of autoland or HUD to touchdown.</p> <p>SA CAT I/II: Procedure NA when tower closed.</p>	<p>MALSR</p>	<p>MISSED APPROACH: Climb to 600 then climbing right turn to 2000 direct LSU VORTAC and hold.</p>			
		<p>ATIS <b>125.2</b></p>	<p>BATON ROUGE APP CON* <b>120.3 278.3</b></p>	<p>RYAN TOWER* <b>118.45 (CTAF) 257.8</b></p>	<p>GND CON <b>121.9</b></p>



ELEV 70	<b>D</b>	TDZE 70
---------	----------	---------



CATEGORY	A	B	C	D
S-ILS 22R	SA CAT I	RA 163/14	150 DA 220	
S-ILS 22R	SA CAT II	RA 106/12	100 DA 170	

**SA CATEGORY I & II ILS - SPECIAL AIRCREW & AIRCRAFT CERTIFICATION REQUIRED**

SC-4, 23 JAN 2025 to 20 FEB 2025

SC-4, 23 JAN 2025 to 20 FEB 2025