

LOC/DME I-CLZ 108.7 Chan 24	APP CRS 223°	Rwy Idg 7500 TDZE 70 Apt Elev 70
---	------------------------	---

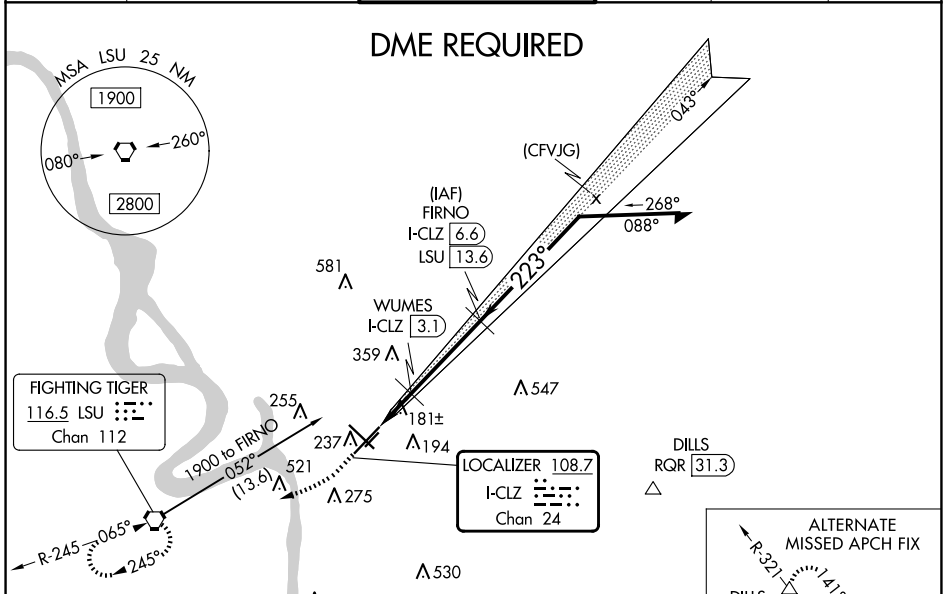
ILS or LOC/DME RWY 22R

BATON ROUGE METRO, RYAN FLD (BTR)

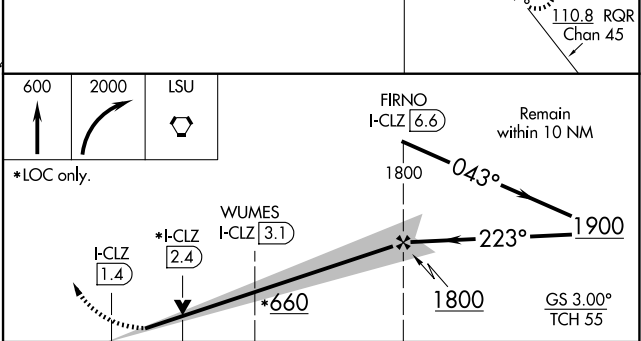
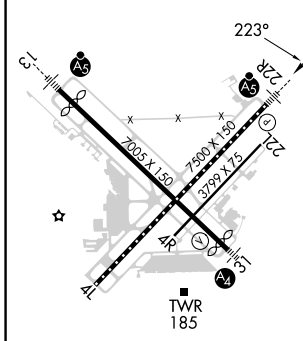
⚠ When local altimeter setting not received, use Hammond altimeter setting and increase all DA 91 feet and all MDA 100 feet; increase S-ILS 22R all Cats visibility to RVR 2200; increase S-LOC 22R Cat C/D visibility to RVR 5000. For inop MALSRS when using Hammond altimeter setting, increase S-ILS 22R all Cats visibility to RVR 4500, and S-LOC 22R Cat C/D visibility to 1 3/8 mile. For inop MALSRS, increase S-LOC 22R Cat C/D visibility to RVR 5500. VDP NA with Hammond altimeter setting.

MALSRS
MISSED APPROACH: Climb to 600 then climbing right turn to 2000 direct LSU VORTAC and hold.

ATIS 125.2	BATON ROUGE APP CON * 120.3 278.3	RYAN TOWER * 118.45 (CTAF) 0 257.8	GND CON 121.9	CLNC DEL 119.4	UNICOM 122.95
----------------------	---	--	-------------------------	--------------------------	-------------------------



ELEV 70	D	TDZE 70
---------	----------	---------



CATEGORY	A	B	C	D
S-ILS 22R	270/18 200 (200-1/2)			
S-LOC 22R	440/24	370 (400-1/2)	440/35	370 (400-3/4)
C CIRCLING	560-1 490 (500-1)	660-1 590 (600-1)	780-2 710 (800-2)	840-2 1/2 770 (800-2 1/2)

TDZ/CL RWY 22R
HIRL Rwy 13-31 and 4L-22R
MIRL Rwy 4R-22L

SC-4, 23 JAN 2025 to 20 FEB 2025

SC-4, 23 JAN 2025 to 20 FEB 2025