

WAAS CH 86225 W22A	APP CRS 224°	Rwy Idg 7500 TDZE 70 Apt Elev 70
--	------------------------	---

RNAV (GPS) RWY 22R

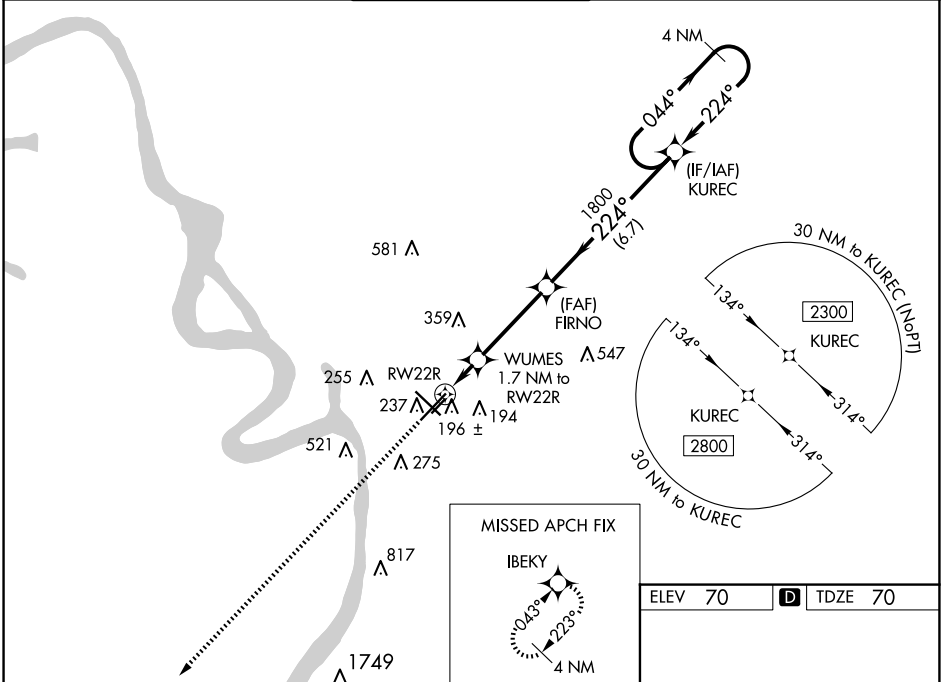
BATON ROUGE METRO, RYAN FLD (BTR)

⚠ Baro-VNAV NA when using Hammond altimeter setting. For uncompensated Baro-VNAV systems, LNAV/VNAV NA below -5°C (23°F) or above 54°C (130°F). DME/DME RNP-0.3 NA. VDP NA with Hammond altimeter setting. When local altimeter setting not received, use Hammond altimeter setting and increase all DA 91 feet, and all MDA 100 feet; increase LNAV/VNAV all Cats visibility 3/8 mile, LNAV Cat C/D visibility to RVR 5000, and Circling Cat C/D visibility 1/4 mile. For inop MALS R when using Hammond altimeter setting, increase LPV all Cats visibility to RVR 4500, and LNAV C/D visibility to 1 1/8 mile.

MALS R

MISSED APPROACH:
Climb to 2800 direct IBEKY and hold.

ATIS 125.2	BATON ROUGE APP CON* 120.3 278.3	RYAN TOWER* 118.45 (CTAF) 0 257.8	GND CON 121.9	CLNC DEL 119.4	UNICOM 122.95
----------------------	--	---	-------------------------	--------------------------	-------------------------



2800	IBEKY				
*LNAV only.		WUMES *1.1 NM to RW22R	FIRNO 1800	KUREC 4 NM Holding Pattern	2300
		1.7 NM to RW22R	1800	GP 3.00° TCH 55	
		1.1	0.6	3.6 NM	6.7 NM
CATEGORY	A	B	C	D	
LPV DA	270/18		200 (200-1/2)		
LNAV/VNAV DA	486/45		416 (500-3/8)		
LNAV MDA	460/24	390 (400-1/2)	460/35	390 (400-3/8)	
C CIRCLING	560-1 490 (500-1)	660-1 590 (600-1)	780-2 710 (800-2)	840-2 1/2 770 (800-2 1/2)	

ELEV 70	D TDZE 70
---------	------------------

TDZ/CL Rwy 22R
HIRL Rwys 13-31 and 4L-22R **Ⓢ**
MIRL Rwy 4R-22L

SC-4, 23 JAN 2025 to 20 FEB 2025

SC-4, 23 JAN 2025 to 20 FEB 2025