

# DIXEE THREE ARRIVAL (RNAV)

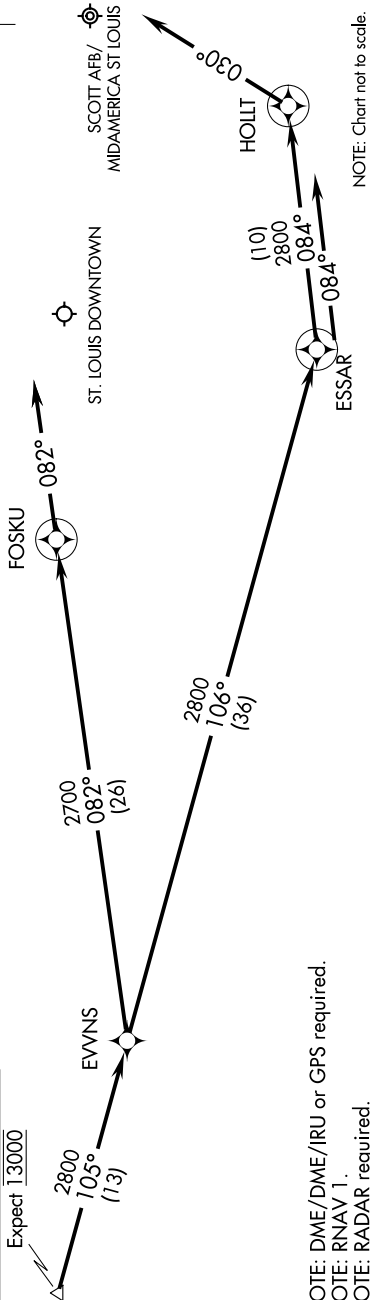
BELLEVILLE, ILLINOIS

EC-3, 23 JAN 2025 to 20 FEB 2025

ST LOUIS APP CON  
128.1 307.05  
BLV/KBLV ATIS \*  
128.7 256.7  
GPS ATIS  
121.45

### DIXEE VERTICAL NAVIGATION PLANNING INFORMATION

Expect 13000



SCOTT AFB/  
MIDAMERICA ST LOUIS

ST. LOUIS DOWNTOWN

NOTE: Chart not to scale.

NOTE: DME/DME/IRU or GPS required.  
NOTE: RNAV 1.  
NOTE: RADAR required.

### ARRIVAL ROUTE DESCRIPTION

#### ST. LOUIS DOWNTOWN:

LANDING RWY 12R: From DIXEE on track 105° to EVNS, then on track 082° to FOSKU. Expect radar vector prior to FOSKU. If no heading received, track 082°.

LANDING RWY 30L/R: From DIXEE on track 105° to EVNS, then on track 106° to ESSAR, then on track 084° to HOLLT. Expect radar vector prior to HOLLT. If no heading received, track 030°.

#### SCOTT AFB/MIDAMERICA ST LOUIS:

LANDING RWYS 14L/R, 32L/R: From DIXEE on track 105° to EVNS, then on track 106° to ESSAR. Expect radar vector prior to ESSAR. If no heading received, track 084°.

# DIXEE THREE ARRIVAL (RNAV)

BELLEVILLE, ILLINOIS

EC-3, 23 JAN 2025 to 20 FEB 2025