

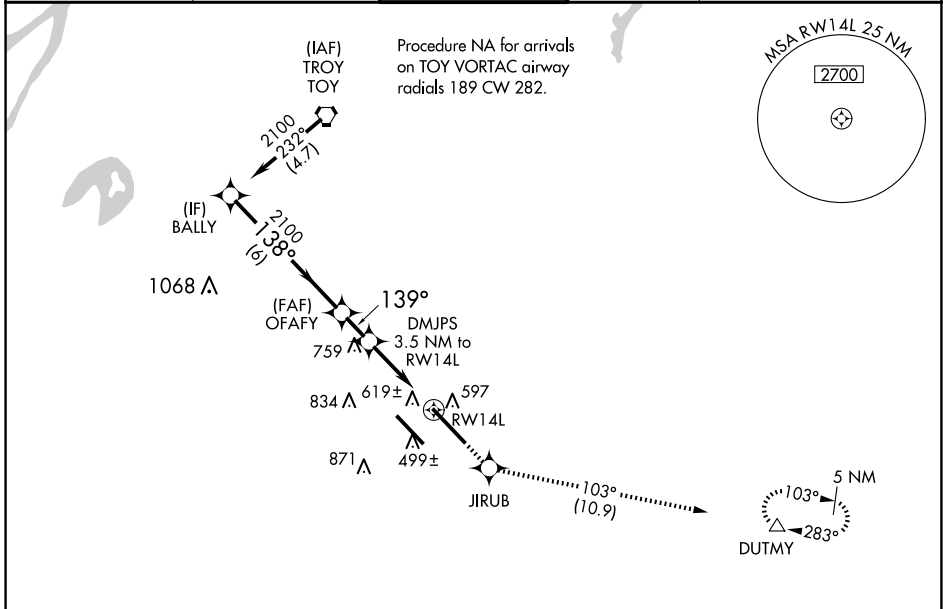
WAAS CH 58218 W14A	APP CRS 139°	Rwy Idg 10000 TDZE 442 Apt Elev 459
--	------------------------	--

RNAV (GPS) RWY 14L

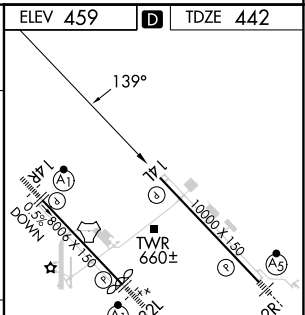
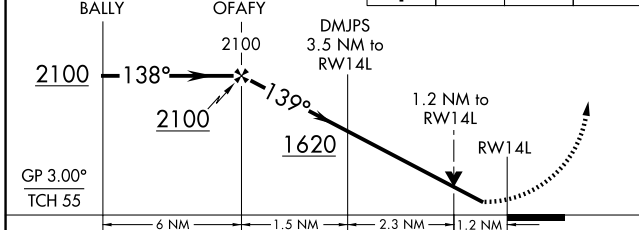
SCOTT AFB/MIDAMERICA ST LOUIS (BLV)

RNAV 1 - GPS.	MISSED APPROACH: Climb to 2300 direct JIRUB and on track 103° to DUTMY and hold.
<p>▼ Rwy 14L helicopter visibility reduction below RVR 4000 NA.</p> <p>▲ For uncompensated Baro-VNAV systems, LNAV/VNAV NA below -18°C or above 54°C.</p> <p>ASR</p>	

ATIS ★ 128.7 256.7	ST LOUIS APP CON 125.2 281.5	SCOTT TOWER 128.25 253.5	GND CON 119.2 275.8	CLNC DEL 119.875 263.025
------------------------------	--	------------------------------------	-------------------------------	------------------------------------



VGSI and RNAV glidepath not coincident (VGSI Angle 3.00/TCH 71).	2300	JIRUB	tr 103°	DUTMY	ELEV 459	D	TDZE 442
--	------	-------	---------	-------	----------	---	----------



CATEGORY	A	B	C	D
LPV DA	694/40 252 (300-¾)			
LNAV/VNAV DA	934-1⅜ 492 (500-1⅝)			
LNAV MDA	900/55	458 (500-1)	900-1⅜ 458 (500-1⅝)	
Ⓢ CIRCLING	1000-1 541 (600-1)	1120-1 661 (700-1)	1240-2¼ 781 (800-2¼)	1240-2½ 781 (800-2½)

REIL Rwy 14L
HIRL Rwy 14R-32L and 14L-32R

EC-3, 23 JAN 2025 to 20 FEB 2025

EC-3, 23 JAN 2025 to 20 FEB 2025