

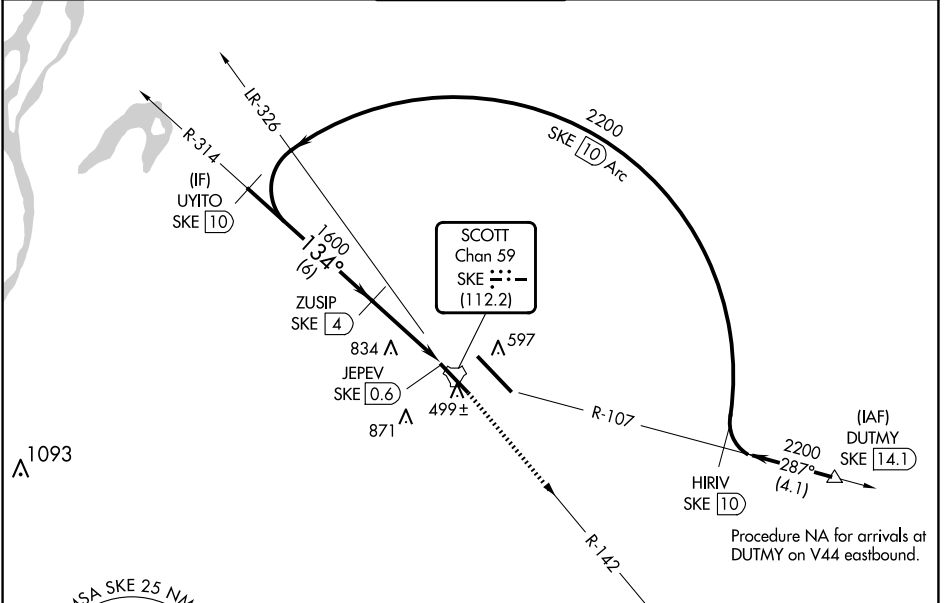
TACAN SKE Chan 59 (112.2)	APP CRS 134°	Rwy ldg TDZE 459 Apt Elev 459	8006
--	------------------------	---	-------------

TACAN RWY 14R

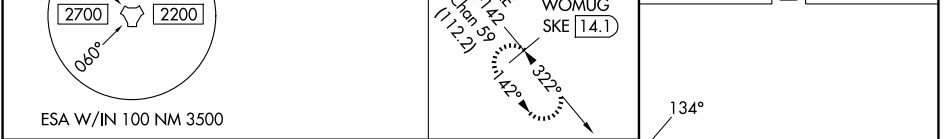
SCOTT AFB/MIDAMERICA ST LOUIS (BLV)

	For inop ALS, increase S-14R Cat E visibility to 1 1/8 SM.		MISSED APPROACH: Climb to 2400 on SKE R-142 to WOMUG/14.1 DME and hold.
	ASR		

ATIS ★ 128.7 256.7	ST LOUIS APP CON 125.2 281.5	SCOTT TOWER 128.25 253.5	GND CON 119.2 275.8	CLNC DEL 119.875 263.025
------------------------------	--	------------------------------------	-------------------------------	------------------------------------



ELEV 459	D TDZE 459
----------	-------------------



UYITO SKE 10	VGSI and descent angles not coincident (VGSI Angle 3.00/TCH 50).				2400	WOMUG SKE 14.1
2200	134°	3.00° TCH 65	SKE 2.5	JEPEV SKE 0.6		

CATEGORY	A	B	C	D	E	
S-14R	1100/24	641 (700-1/2)	1100-1 3/8	641 (700-1 3/8)		
C CIRCLING	1100-1 641 (700-1)	1120-1 661 (700-1)	1240-2 1/4 781 (800-2 1/4)	1240-2 1/2 781 (800-2 1/2)	1240-2 3/4 781 (800-2 3/4)	REL Rwy 14L HIRL Rwy 14L-32R and 14R-32L

EC-3, 23 JAN 2025 to 20 FEB 2025

EC-3, 23 JAN 2025 to 20 FEB 2025