

TACAN SKE Chan 59 (112.2)	APP CRS 230°	Rwy ldg TDZE Apt Elev	N/A N/A 459
--	------------------------	-----------------------------	--

TACAN-A

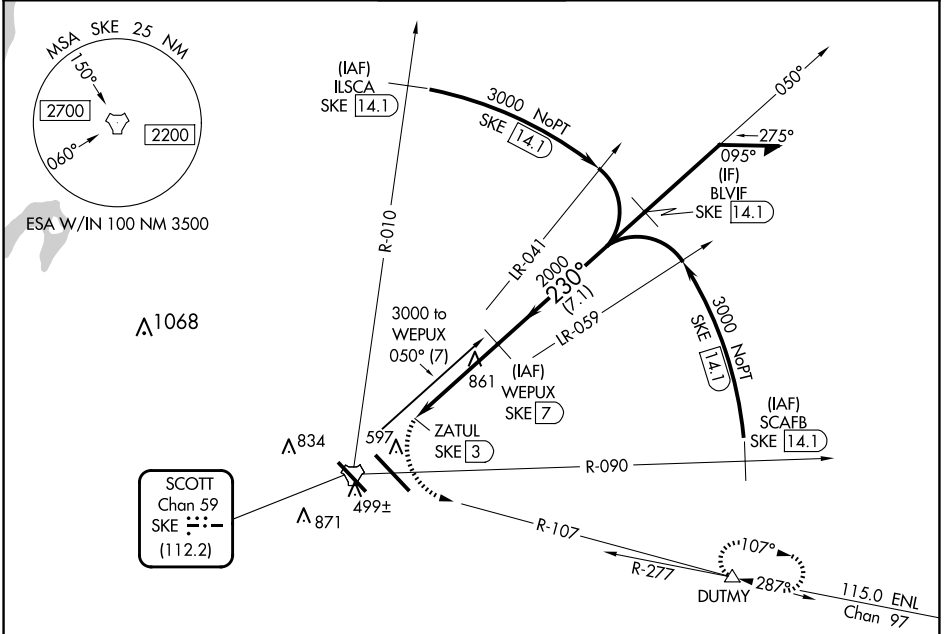
SCOTT AFB/MIDAMERICA ST LOUIS (BLV)

⚠ RADAR required. When local altimeter setting not received, use St Louis Downtown altimeter setting; increase all MDA 60 feet; increase Circling Cat C/D/E visibility ¼ mile.

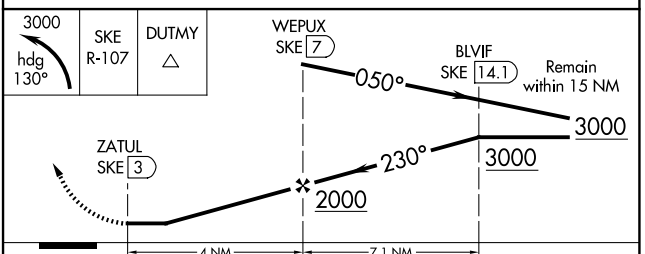
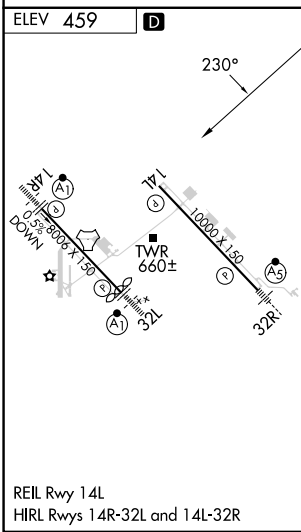
ASR

MISSED APPROACH: Climbing left turn to 3000 on heading 130° and SKE TACAN R-107 to DUTMY/SKE 14.1 DME and hold.

ATIS ★ 128.7 256.7	ST LOUIS APP CON 125.2 281.5	SCOTT TOWER 128.25 253.5	GND CON 119.2 275.8	CLNC DEL 119.875 263.025
------------------------------	--	------------------------------------	-------------------------------	------------------------------------



SCOTT
Chan 59
SKE [112.2]



CATEGORY	A	B	C	D	E
C CIRCLING	1180-2¼	721 (800-2¼)	1240-2¼ 781 (800-2¼)	1240-2½ 781 (800-2½)	1240-2¾ 781 (800-2¾)

TACAN-A

EC-3, 23 JAN 2025 to 20 FEB 2025

EC-3, 23 JAN 2025 to 20 FEB 2025