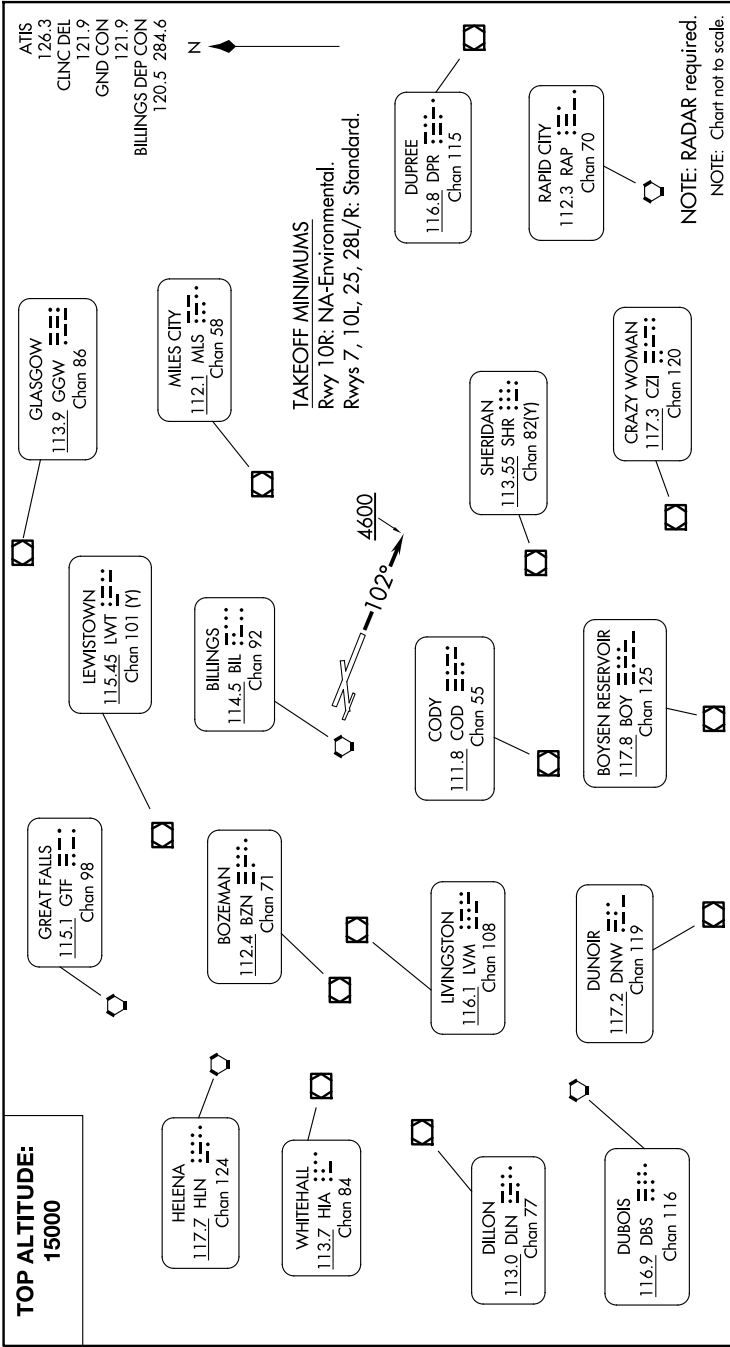


BILLINGS FIVE DEPARTURE

AL-48 (FAA)

BILLINGS LOGAN INTL (BIL)
BILLINGS, MONTANA

NW-1, 23 JAN 2025 to 20 FEB 2025



DEPARTURE ROUTE DESCRIPTION

TAKEOFF RUNWAYS 7, 25, 28L/R: Climb on assigned heading for vectors to assigned fix/route, thence,

TAKEOFF RUNWAY 10L: Climb heading 102° to 4600, then on assigned heading for vectors to assigned fix/route, thence,

. . . . maintain 15000 or assigned lower altitude. Expect clearance to filed altitude/flight level five minutes after departure.

LOST COMMUNICATIONS: If no transmissions are received for 1 minute after departure, fly last assigned heading until reaching 7000. Proceed direct BIL VORTAC, then on last routing cleared and climb to filed altitude.

BILLINGS FIVE DEPARTURE

BILLINGS, MONTANA
BILLINGS LOGAN INTL (BIL)

NW-1, 23 JAN 2025 to 20 FEB 2025