

LOC/DME I-BMO 111.5 Chan 52	APP CRS 282°	Rwy Idg TDZE Apt Elev 10518 3517 3662
---	------------------------	---

ILS or LOC RWY 28R

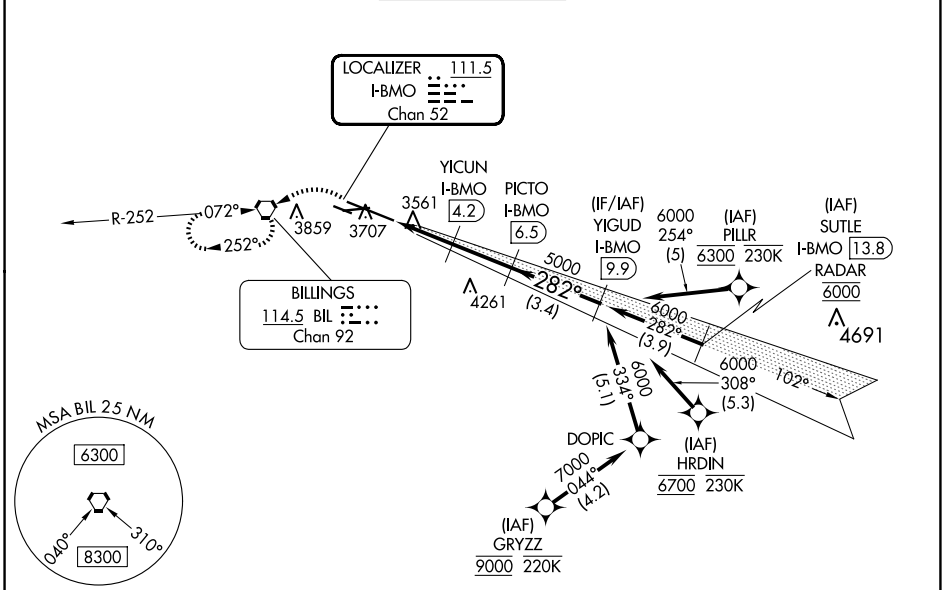
BILLINGS LOGAN INTL (BIL)

DME required.
Aircraft not GPS equipped - RADAR required for procedure entry.
RNP APCH-GPS. from GRYZZ or HRDIN or PILLR.

⚠ Rwy 28R helicopter visibility reduction below 3/4 SM NA.

MISSED APPROACH: Climb to 4000 then climbing left turn to 6000 direct BIL VORTAC and hold, continue climb-in-hold to 6000.

ATIS 126.3	BILLINGS APP CON 120.5 284.6	BILLINGS TOWER 127.2 257.8	GND CON 121.9	CLNC DEL 121.9
----------------------	--	--------------------------------------	-------------------------	--------------------------

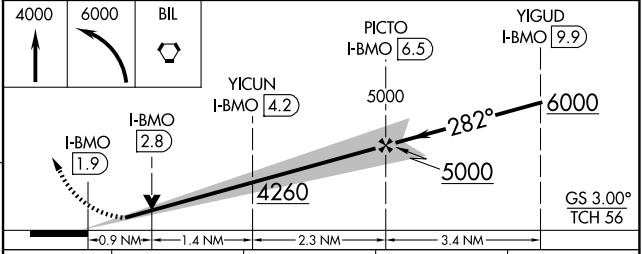
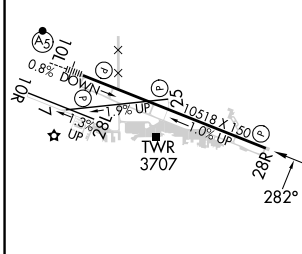


NW-1, 23 JAN 2025 to 20 FEB 2025

NW-1, 23 JAN 2025 to 20 FEB 2025

ELEV 3662	D	TDZE 3517
-----------	----------	-----------

Rwy 10R-10L: 3800 X 75
Rwy 7-25: 5501 X 75



CATEGORY	A	B	C	D
S-ILS 28R	3767-3/4		250 (200-3/4)	
S-LOC 28R	3840-1		323 (200-1)	
C CIRCLING	4160-1	498 (500-1)	4180-1 1/2 518 (600-1 1/2)	4580-3 918 (1000-3)

HIRL Rwy 10L-28R
REIL Rwy 25 and 28R
MIRL Rwy 7-25 and 10R-28L