

LOC I-BZX 111.5	APP CRS 131°	Rwy Idg 8794
		TDZE 1655
		Apt Elev 1661

ILS or LOC RWY 13

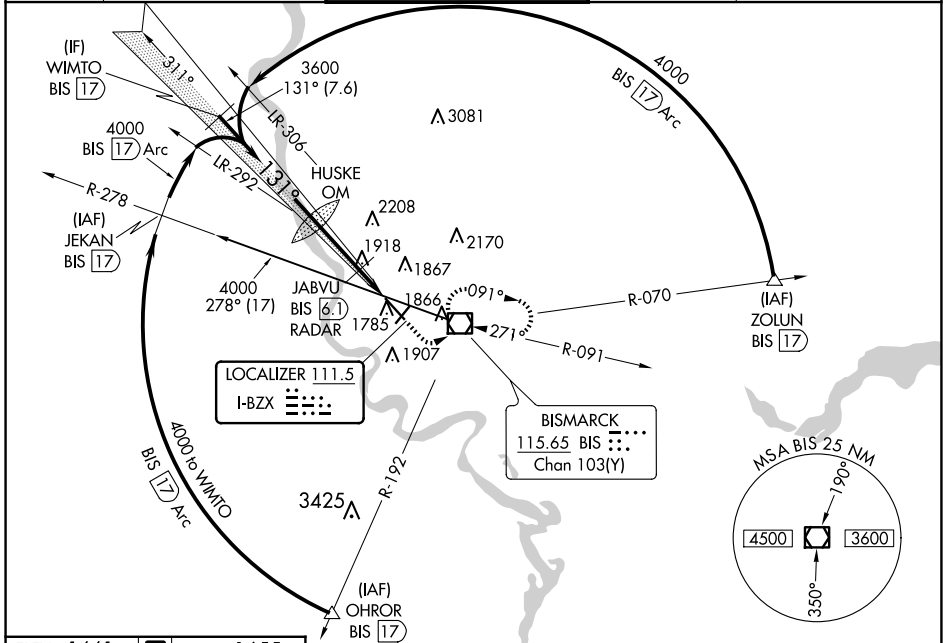
BISMARCK MUNI (BIS)

DME required for procedure entry. DME required.

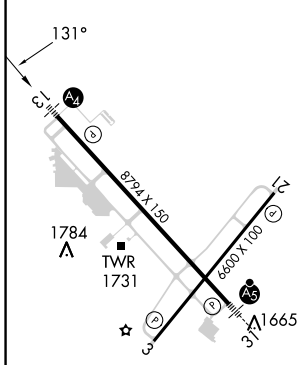
ASR Inop table does not apply to S-ILS 13. DME from BIS VOR/DME. Simultaneous reception of I-BZX and BIS DME required. # DME from BIS VOR/DME.

MALS MISSED APPROACH: Climb to 2200 then climbing left turn to 3600 direct BIS VOR/DME and hold, continue climb-in-hold to 3600.

ATIS 119.35	BISMARCK APP CON ★ 126.3 298.9	BISMARCK TOWER★ 118.3 (CTAF) 0 257.8	GND CON 121.9	UNICOM 122.95
-----------------------	--	--	-------------------------	-------------------------



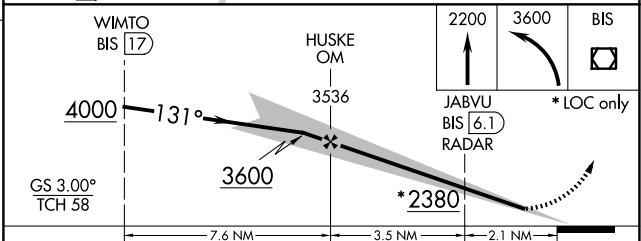
ELEV 1661	D	TDZE 1655
-----------	----------	-----------



REIL Rwy 3 and 21
HIRL Rwy 3-21 and 13-31

FAF to MAP 5.6 NM

Knots	60	90	120	150	180
Min:Sec	5:36	3:44	2:48	2:14	1:52



CATEGORY	A	B	C	D
S-ILS 13	1855- ³ / ₄ 200 (200- ³ / ₄)			
S-LOC 13	2380- ³ / ₄	725 (800- ³ / ₄)	2380-1 ³ / ₄	725 (800-1 ³ / ₄)
C CIRCLING	2380-1	719 (800-1)	2460-2 ¹ / ₄ 799 (800-2 ¹ / ₄)	2460-2 ¹ / ₂ 799 (800-2 ¹ / ₂)
# JABVU FIX MINIMUMS				
S-LOC 13	2180- ³ / ₄	525 (600- ³ / ₄)	2180-1 ¹ / ₄	525 (600-1 ¹ / ₄)
C CIRCLING	2200-1	539 (600-1)	2460-2 ¹ / ₄ 799 (800-2 ¹ / ₄)	2460-2 ¹ / ₂ 799 (800-2 ¹ / ₂)

NC-1, 23 JAN 2025 to 20 FEB 2025

NC-1, 23 JAN 2025 to 20 FEB 2025