

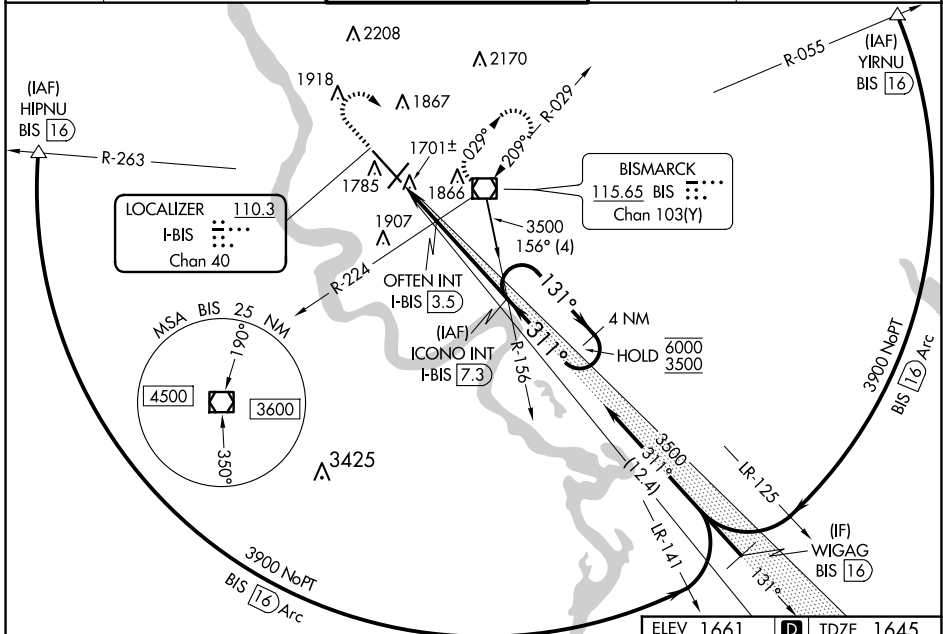
LOC/DME I-BIS 110.3 Chan 40	APP CRS 311°	Rwy ldg TDZE Apt Elev	8794 1645 1661
--	------------------------	-----------------------------	---

ILS or LOC RWY 31

BISMARCK MUNI (BIS)

DME required for procedure entry.		MALSR	MISSED APPROACH: Climb to 2800 then climbing right turn to 3600 direct BIS VOR/DME and hold.
ASR	Autopilot coupled approach NA below 2680. For inop ALS, increase S-LOC 31 OFTEN FIX Cat C/D minimums visibility to RVR 5500.		

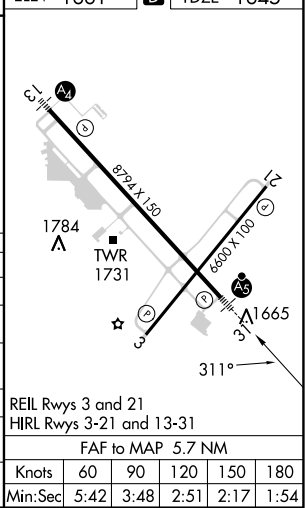
ATIS 119,35	BISMARCK APP CON* 126.3 298.9	BISMARCK TOWER* 118.3 (CTAF) 0 257.8	GND CON 121.9	UNICOM 122.95
-----------------------	---	--	-------------------------	-------------------------



NC-1, 23 JAN 2025 to 20 FEB 2025

NC-1, 23 JAN 2025 to 20 FEB 2025

ELEV 1661	D	TDZE 1645
2800	3600	BIS
Use I-BIS DME when on the localizer course.		
*LOC only.		ICONO INT I-BIS 7.3
*I-BIS 2.6		4 NM Holding Pattern
I-BIS 1.6		OFTEN INT I-BIS 3.5
2300*		3500
131°		6000
311°		3500
311°		GS 3.00°
311°		TCH 48
1 NM		0.9 NM
3.8 NM		
CATEGORY	A	B
S-ILS 31	1845/24	
S-LOC 31	2300/24	655 (700-1/2)
CIRCLING	2300-1	639 (700-1)
OFTEN FIX MINIMUMS (DUAL VOR RECEIVERS OR DME REQUIRED)		
S-LOC 31	2020/24	375 (400-1/2)
CIRCLING	2240-1	579 (600-1)
	2460-2 1/4	799 (800-2 1/4)
	2460-2 1/2	799 (800-2 1/2)



REIL Rwy 3 and 21					
HIRL Rwy 3-21 and 13-31					
FAF to MAP 5.7 NM					
Knots	60	90	120	150	180
Min:Sec	5:42	3:48	2:51	2:17	1:54