

(BOBK5.BOBKT) 24193

BOBK FIVE DEPARTURE (RNAV)

BOZEMAN YELLOWSTONE INTL (BZN)

AL-59 (FAA)

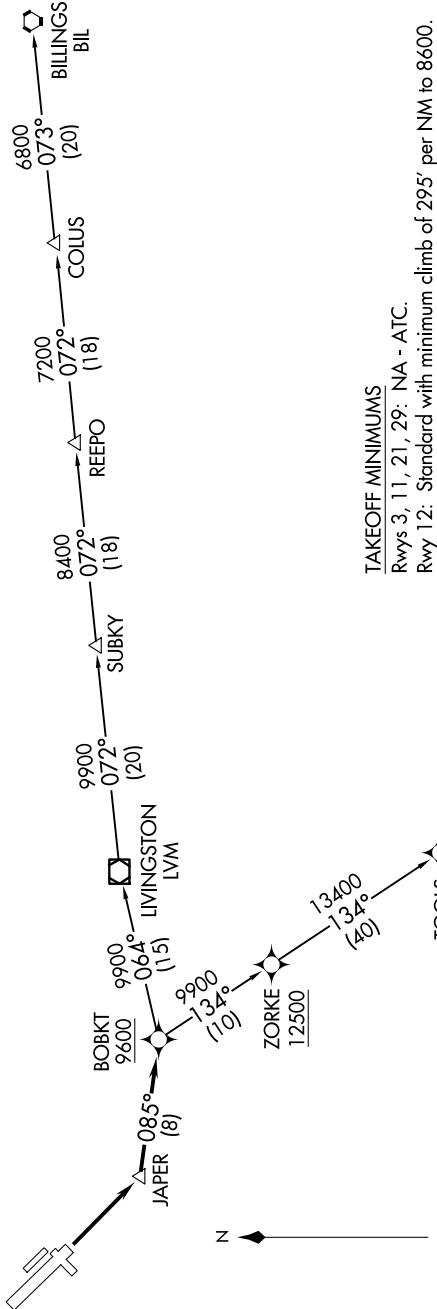
BOZEMAN, MONTANA

NW-1, 23 JAN 2025 to 20 FEB 2025

BIG SKY DEP CON *
118.975 226.675
GND CON
121.8
BOZEMAN TOWER *
118.2

RNAV 1 - GPS.

TOP ALTITUDE:
16000



TAKEOFF MINIMUMS
Rwys 3, 11, 21, 29: NA - ATC.
Rwy 12: Standard with minimum climb of 295' per NM to 8600.

DEPARTURE ROUTE DESCRIPTION

TAKEOFF RUNWAY 12: Climb direct JAPER, then on track 085° to cross BOBK at or above 9600. Thence on assigned transition, maintain 16000. Expect filed altitude 10 minutes after departure.

BILLINGS TRANSITION (BOBK5.BIL)
BOYSEN RESERVOIR TRANSITION (BOBK5.BOY)

BOBK FIVE DEPARTURE (RNAV)

(BOBK5.BOBKT) 11JUL24

BOZEMAN, MONTANA
BOZEMAN YELLOWSTONE INTL (BZN)

NW-1, 23 JAN 2025 to 20 FEB 2025

NOTE: Chart not to scale.