

(HIA5.HIA) 23334

WHITEHALL FIVE DEPARTURE

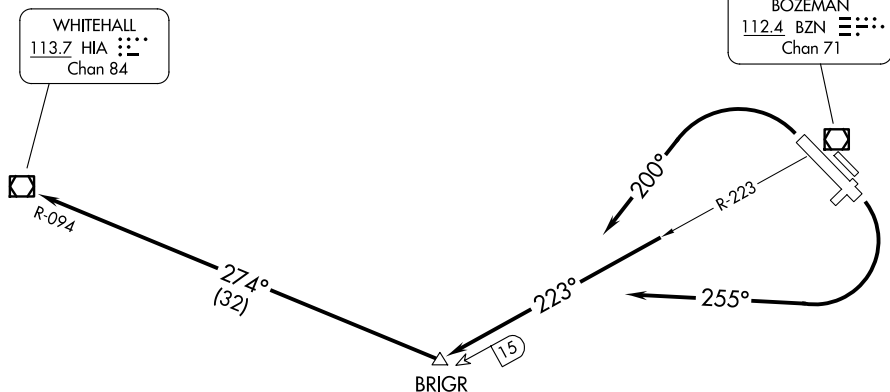
BOZEMAN YELLOWSTONE INTL (BZN)

AL-59 (FAA)

BOZEMAN, MONTANA

BIG SKY DEP CON ★
118.975 226.675
ATIS
135.425
GND CON
121.8
BOZEMAN TOWER ★
118.2 (CTAF)

**TOP ALTITUDE:
16000**



TAKEOFF MINIMUMS
Rwys 3, 11, 21, 29: NA- ATC.
Rwys 12, 30: Standard.

NOTE: Chart not to scale.

DEPARTURE ROUTE DESCRIPTION

TAKEOFF RUNWAY 12: Climbing right turn heading 255° to intercept BZN R-223 to BRIGR, then continue climbing on HIA R-094 to HIA VOR/DME, cross HIA VOR/DME at or above MCA or MEA for route of flight.

TAKEOFF RUNWAY 30: Climbing left turn heading 200° to intercept BZN R-223 to BRIGR, then continue climbing on HIA R-094 to HIA VOR/DME, cross HIA VOR/DME at or above MCA or MEA for route of flight.

WHITEHALL FIVE DEPARTURE

(HIA5.HIA) 24MAY18

BOZEMAN, MONTANA
BOZEMAN YELLOWSTONE INTL (BZN)

NW-1, 23 JAN 2025 to 20 FEB 2025

NW-1, 23 JAN 2025 to 20 FEB 2025